

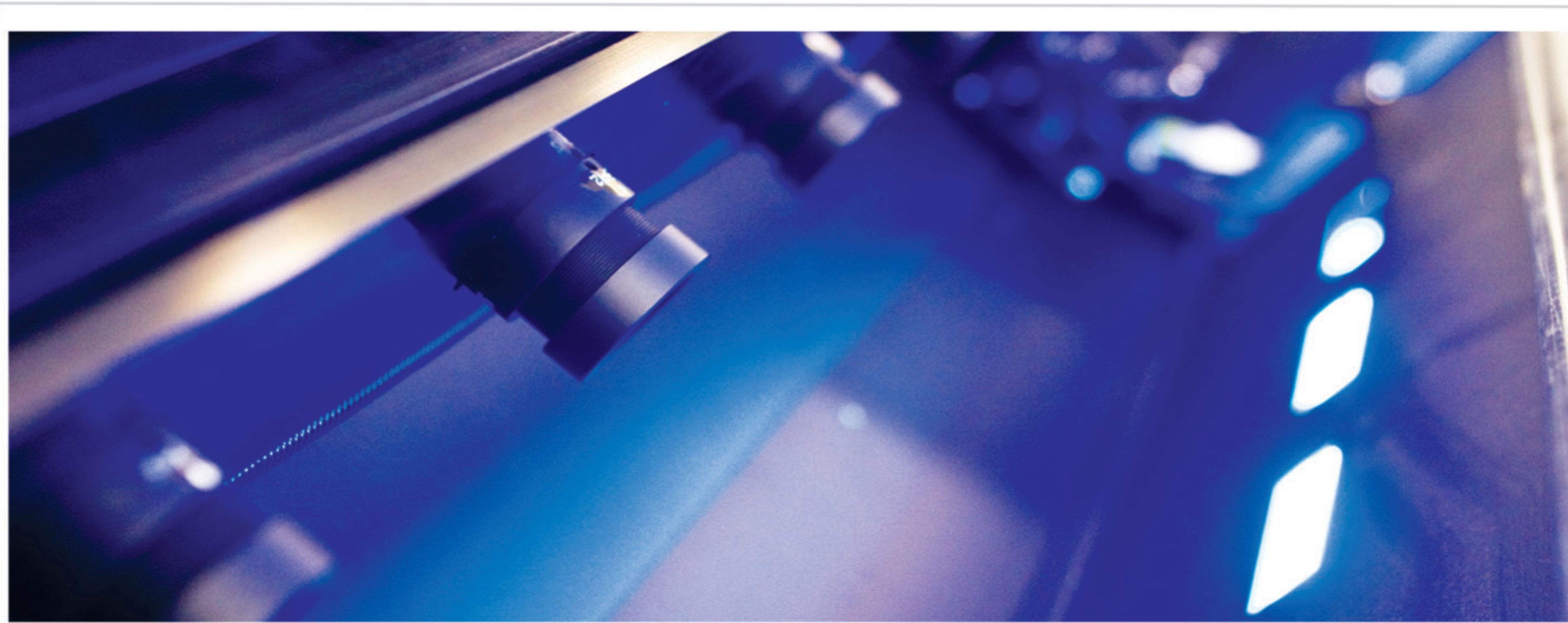
AlphaScan II





An Affordable Color Sorter to help you Produce the Cleanest Possible Product

- ▶ Compact, small footprint, low cost, high capacity color sorting machine
- ▶ High speed, digital signal processing technology
- ▶ Applications: Rice, wheat and other grains, seeds, coffee beans, corn, pulses and many more
- ▶ Several models available to handle a variety of capacity requirements. The smaller models can be expanded to double the capacity within the same frame.
- ▶ High flow version available with specifically designed and patented feed system for wheat applications
- ▶ Self monitoring with auto calibration during operation
- ▶ User friendly multilingual touch screen for easy set up and operation
- ▶ Modular design and components for easy trouble shooting and low cost repairs
- ▶ Local technical support available from 10 Satake group companies worldwide



Scan the product with high precision

High Precision Defects Recognition

Multiple digital high resolution CCD cameras scan the product front and rear for maximum accuracy and sorting quality



Several feed chute profiles available

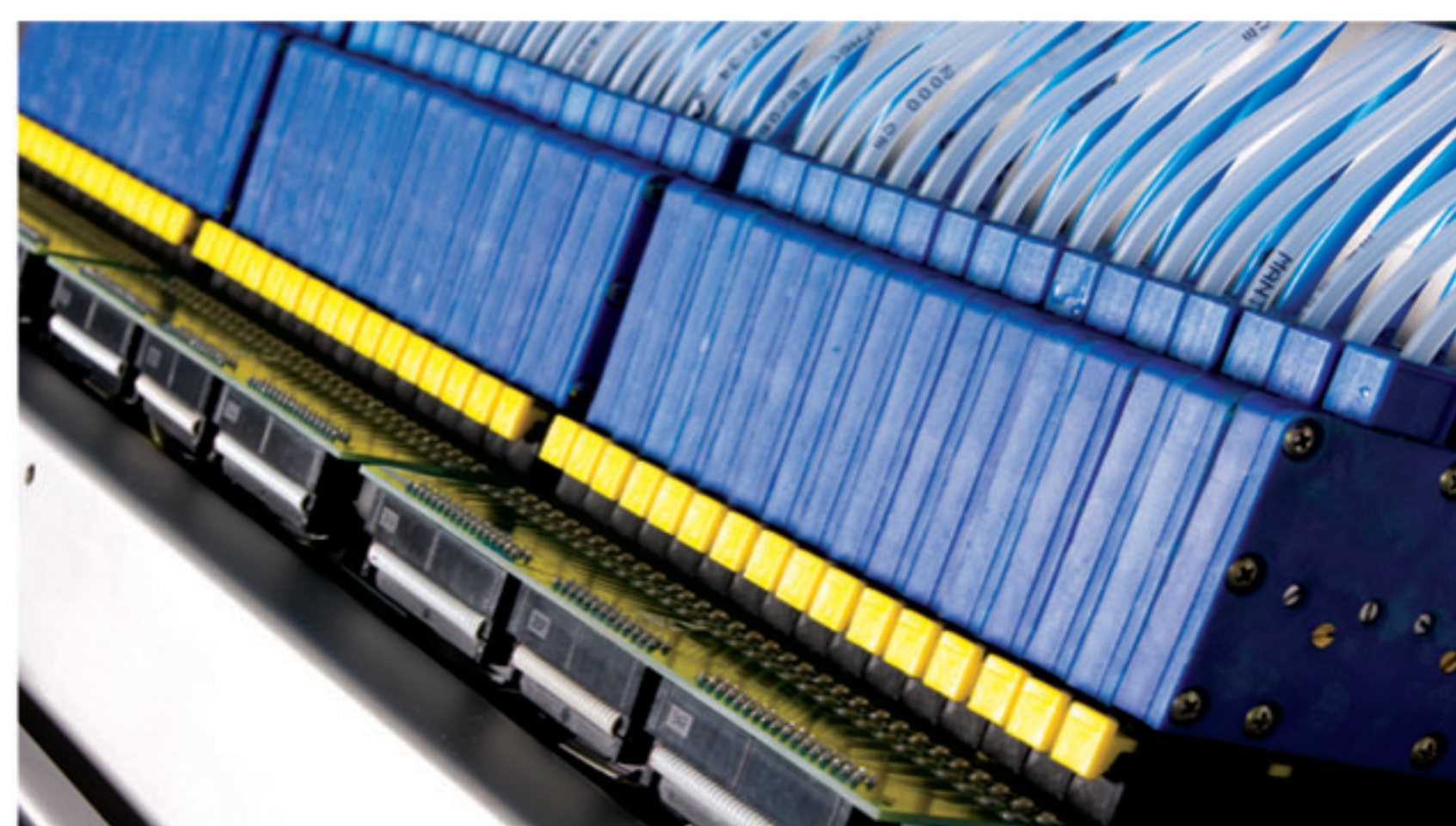
Highest Production Capacities

Several chute profile designs for high capacity and maximum yields



Optimum Vibratory Feed System Design

Regular, constant and uniform product flow to the feed chutes results in improved accept quality and maximum rejection accuracy



Precise Removal of Defective Products

High ejector density for maximum reject concentration, 160 ejectors on model AS II 160



Touch Screen

User friendly, multilingual touch screen for easy set up and operation

Producing the Best Quality Product



Insect Damage

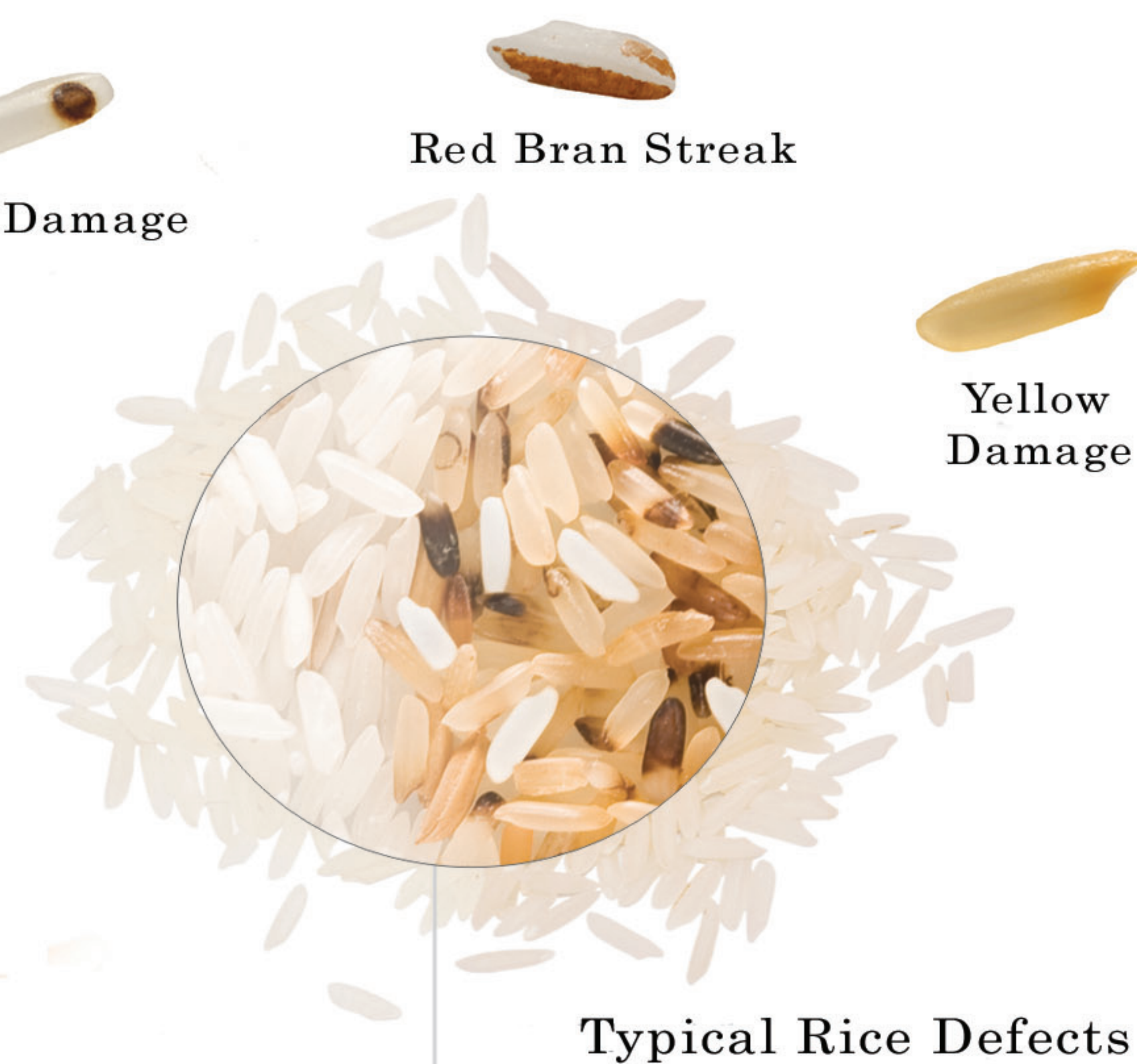
Red Bran Streak

Objectionable Seed

Yellow Damage

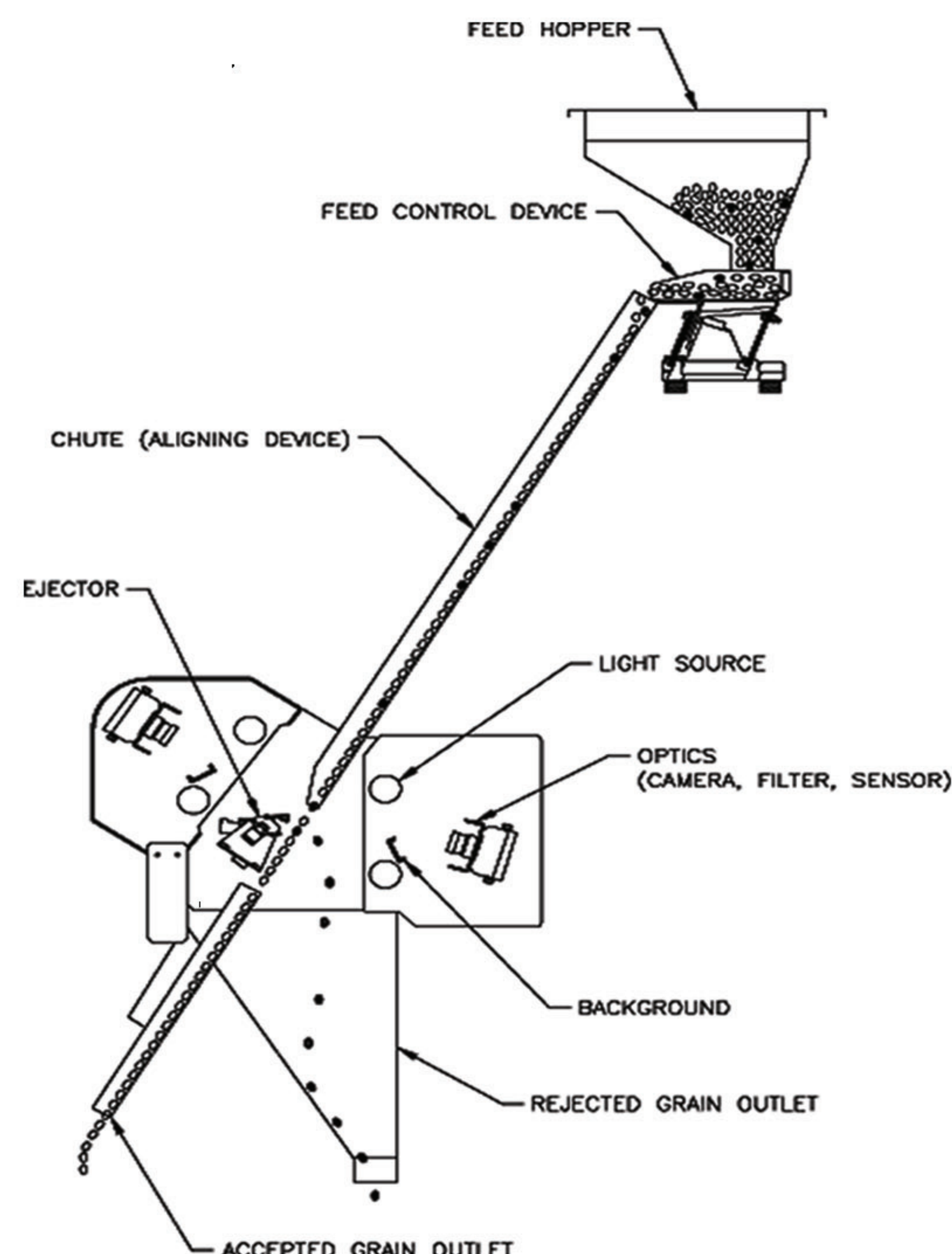
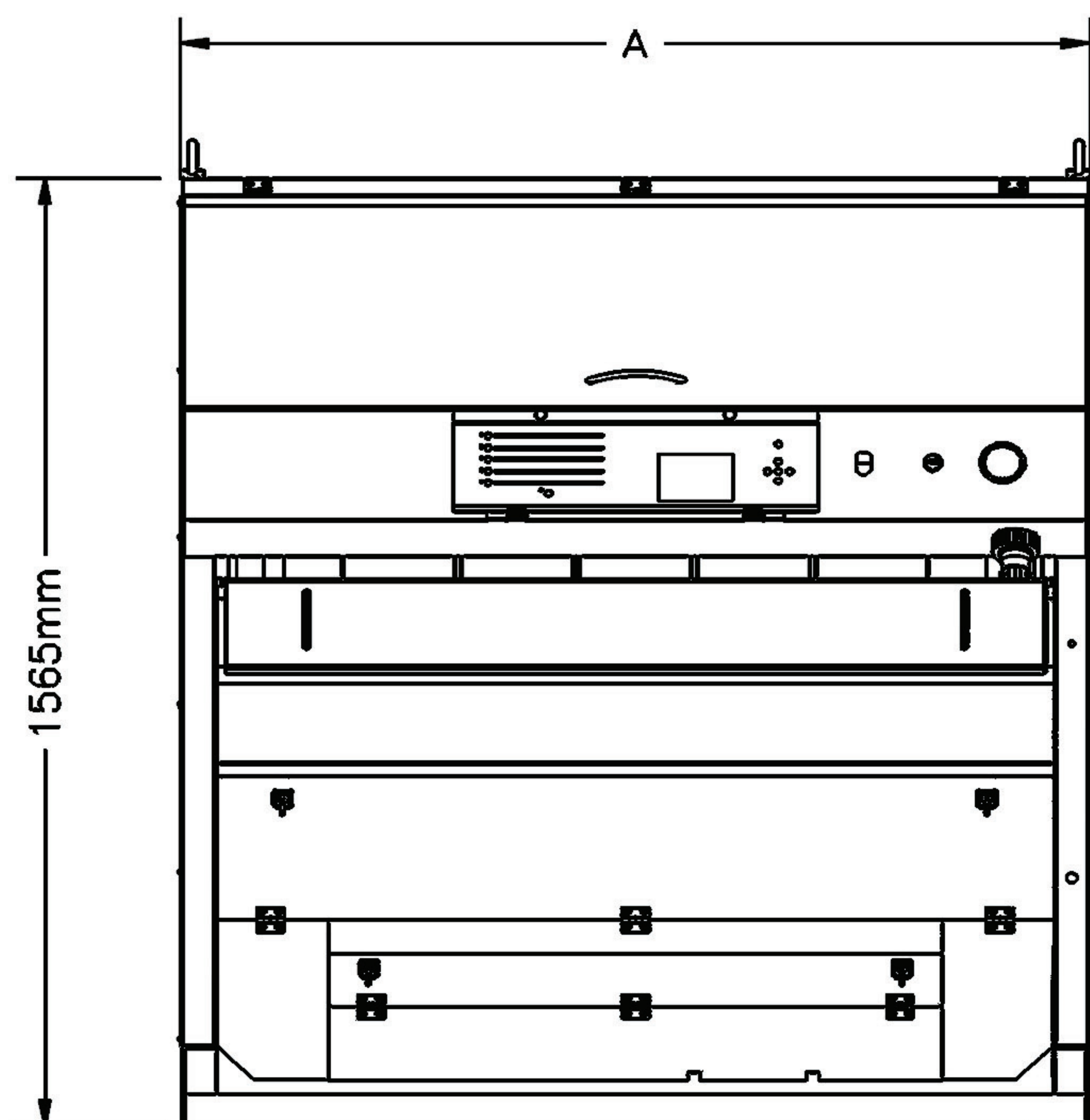
Paddy

Typical Rice Defects



AlphaScan II

Technical Specifications



| | Typical Sorting Capacities: lbs/hr (TPH) | | | | |
|------------------|--|-------------------------------|-------------------------------|------------------------------|-------------------------------|
| | Rice | Wheat | Robusta Coffee | Seeds | Corn |
| AS II 32 | 2600 – 7000 (1.2 – 3.2) | 2600 – 7000 (1.2 – 3.2) | 2000 – 4500 (1.0 – 2.0) | 500 – 2000 (0.5 – 2.0) | 2000 – 6500 (1.0 – 3.0) |
| AS II 64 | 5200 – 14000 (2.4 – 6.4) | 5200 – 14000 (2.4 – 6.4) | 4000 – 9000 (2.0 – 4.0) | 1000 – 4000 (1.0 – 4.0) | 4000 – 13000 (2.0 – 6.0) |
| AS II 96 | 7800 – 21000 (3.6 – 9.6) | 7800 – 21000 (3.6 – 9.6) | 6000 – 13500 (3.0 – 6.0) | 1500 – 6000 (1.5 – 6.0) | 6000 – 19500 (3.0 – 9.0) |
| AS II 160 | 13000 – 35000 (6.0 – 16.0) | 13000 – 35000 (6.0 – 16.0) | 10000 – 22500 (5.0 – 10.0) | 2500 – 10000 (2.5 – 10.0) | 10000 – 32500 (5.0 – 15.0) |

| | | AS II 32 | AS II 64 | AS II 96 | AS II 160 |
|---|------------------|------------------|------------|------------|------------|
| Number of Chutes | | 1 | 2 | 3 | 5 |
| Total Width (A) | In (mm) | 41 (1044) | 41 (1044) | 41 (1044) | 53 (1350) |
| Depth | In (mm) | 41.5 (1050) | | | |
| Height | In (mm) | 61.5 (1565) | | | |
| Net Weight | Lbs. (kg) | 700 (318) | 733 (333) | 766 (348) | 1065 (484) |
| Gross Weight | Lbs. (kg) | 1312 (596) | 1345 (611) | 1378 (626) | 1628 (740) |
| Required Main Voltage | Vac | 220 ± 10% | | | |
| Rated Power | VA | 700 | 900 | 1100 | 1700 |
| Frequency | Hz | 50 / 60 | | | |
| Air Consumption (actual depends on product and defect Level) | CFM (lts/sec) | 15 (7) | 30 (14) | 45 (21.2) | 75 (35.4) |
| Air Pressure | PSI | Min 90 @ 5.5 bar | | | |

FOR MORE INFORMATION OR TO MAKE ARRANGEMENTS FOR A SAMPLE TO BE TESTED, PLEASE CONTACT:

Creating the Future

SATAKE

Please visit our website at

<http://www.satake-usa.com>

Email: vision@satake-usa.com

USA, Latin America

Satake USA, Inc

10905 Cash Road

Stafford, TX 77477

Tel: 281/276-3600

Fax: 281/494-1460

Silokonsult AB

Kämpagatan 1

532 36 SKARA

Tfn: 0511-103 65

Fax: 0511-103 66

E-post: info@silokonsult.se

Asia

Satake Corporation

2-30 Saijo Nishihonmachi

Higashi-Hiroshima

Japan 739-8602

Tel: +81-824-20-8539

Fax: +81-824-20-0865