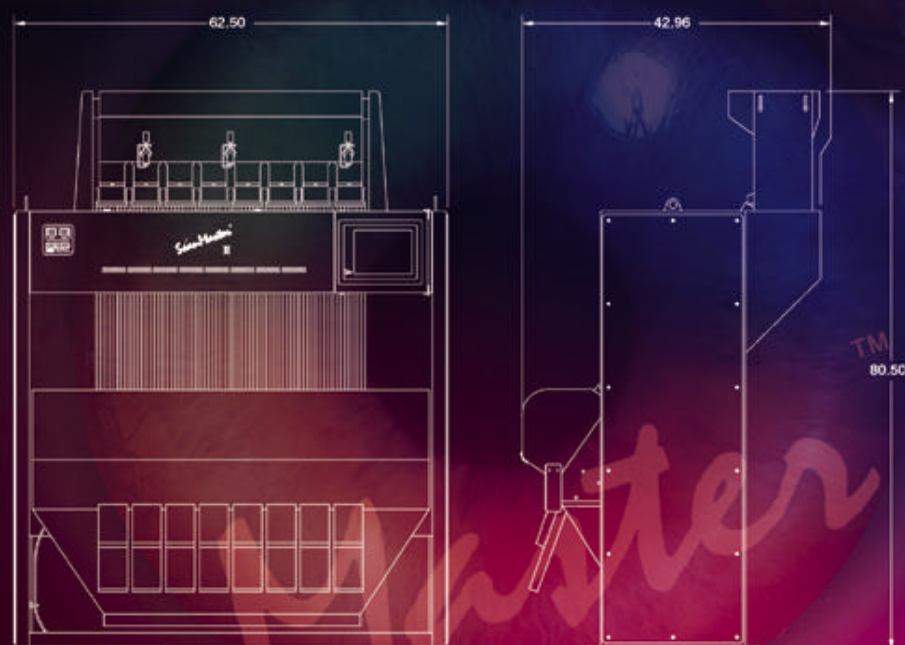


ScanMaster™ II MODELS AND DIMENSIONS



Model and Number of Channels

	SM II 100 (IE/DE)	SM II 200 (IE/DE)	SM II 400 (IE/DE)	SM II 800 (IE/DE)
Large Products- almonds, peanuts, macadamias, etc.	5	10	20	40
Small Products- beans, rice, seeds, cereal grains, corn, coffee, etc.	10	20	40	80

Some of the larger models include the resort option capability where a section of the sorter is reserved for the simultaneous resorting of rejected product from the first pass. This feature allows the user to obtain a very high concentration of final rejected product.

Available ScanMaster™ II Models:

	SM II 100 (IE/DE)	SM II 200 (IE/DE)	SM II 400 (IE/DE)	SM II 800 (IE/DE)
WIDTH in(mm)	34.50 (876.3)	34.50 (876.3)	47.50 (1206.5)	62.50 (1587.5)
DEPTH in(mm)	42.96 (1091.2)	42.96 (1091.2)	42.96 (1091.2)	42.96 (1091.2)
HEIGHT in(mm)	80.50 (2044.7)	80.50 (2044.7)	80.50 (2044.7)	80.50 (2044.7)
WEIGHT lb(kg)	600 (272)	660 (300)	800 (367)	1100 (500)
SINGLE PHASE POWER (Amps) 50/60 HZ 110/220V	10/5	10/5	15/7.5	20/10
AIR SUPPLY SCFM (M ³ /Min) Maximum CFM (Actual depends on product and defect level) 90 PSI/5.5 Bar minimum	10 (0.3)	20 (0.6)	40 (1.1)	60 (1.7)
Exhaust Flow SCFM(M ³ /Min)	250 (7)	250 (7)	387 (11)	530 (15)



FOR MORE INFORMATION OR TO MAKE ARRANGEMENTS FOR A SAMPLE TO BE TESTED, PLEASE CONTACT:

Silokonsult AB

Kämpagatan 1
532 36 SKARA
Tfn: 0511-103 65
Fax: 0511-103 66
E-post: info@silokonsult.se

Europe, Africa, The Middle East

ESM (UK) Ltd.
P.O. Box 47, Horsfield Way
Stockport, Cheshire SK6 2FN(England)
Tel: (44) 161 406-3888
Fax: (44) 161 406-3889

Asia

Satake Corporation
2-30 Saijo Nishihonmachi
Higashi-Hiroshima
Japan 739-8602
Tel: + 81-824-20-8539
Fax + 81-824-20-0865

SATAKE VISION SYSTEMS



CCD CAMERA TECHNOLOGY FOR HIGH RESOLUTION SORTING



The ScanMaster™ IE is designed with multiple high resolution CCD cameras that view the product from the front and back allowing the user to remove defects smaller than .3mm. The ScanMaster™ incorporates a patented circuit that gives the user control over the size of the spot, as well as the color of the spot.

Eighty individual ejectors help ensure that a minimum of acceptable product is removed with each carefully controlled burst of compressed air used to remove the targeted particle.

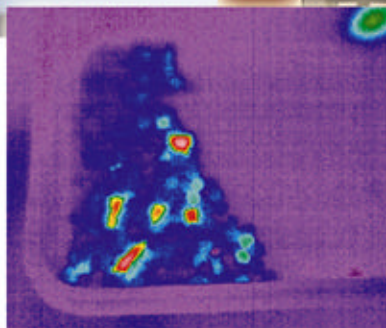
INFRARED FOR THE OPTIMUM IN FOREIGN MATERIAL REMOVAL



Satake, the originator and the recognized leader in infrared technology, presents an entirely new approach to the old problem of foreign material sorting by using advanced sensing detectors. These sensors, which combine conventional visible sorting with the newer infrared sorting technology, are patented by Satake USA.

While other companies may refer to their machines as having "infrared capabilities," the ScanMaster™ DE high capacity system incorporates conventional color sorting and real infrared detection in a true bichromatic sort.

The pictures on the right are two identical samples, one inspected with normal visible lighting and one inspected with infrared.



Model SMII 200



Model SMII 400



Model SMII 800



The ScanMaster™ Series



ADVANCED COLOR TOUCH SCREEN



- Graphical display of ejector firing rates promotes a higher quality yield and a more consistent sort.
- Diagnostic display, maintenance log and run time statistics provide the tools to increase production effectiveness and reduce downtime.
- Real time interface is available to provide sorting information to your plant data system.
- User interface includes password protection for additional security.
- 100 programs for quick product changeover.

INCREASED PRODUCT QUALITY WITH CUSTOM RESORT



10, 20 or 30 of the eighty channel machines (5, 10 or 15 of forty channel machines equipped with large product chutes) may be optionally reserved for the resorting of rejected product from the "first pass" sort. With a separate feeder and sensitivity control within easy reach of the operator, the ScanMaster™ can be relied upon to deliver optimum simultaneous sorts, regardless of differences in incoming damage rates.

INDUSTRIAL ENVIRONMENT DESIGN



From the stainless steel input hopper, down to the use of a scratch-proof safety window on the optical viewer, the ScanMaster™ is designed for industrial use. A unique closed loop cooling system in which the entire frame of the ScanMaster™ serves as a heat radiator eliminates the need for outside air makeup and the inevitable contamination associated with even the very best air filter. An air conditioner or heater can be added if the unit will be installed in unusually cold or hot locations. Empty bin detectors on the incoming hopper shut the feeders off until adequate incoming product is in place, thereby preventing the unnecessary free running of the feed vibrators. Interlock systems also shut the feeders down in the event of system failure on any of the critical parts of the ScanMaster™.