



Silokonsult AB

Kämpagatan 1
532 36 SKARA
Tfn: 0511-103 65
Fax: 0511-103 66
E-post: info@silokonsult.se
www.silokonsult.se



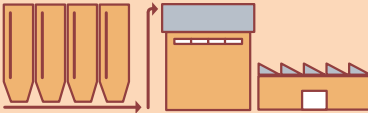



la meccanica



PELLET MILL

INDEX

	COMPANY	6	
	CLM 200 20 hp	8	150-300 kg/h
	CLM 304 60 hp	12	1,5-8 t/h
	CLM 420 75 hp	16	
	CLM 420 125 hp	20	
	CLM 420 150 hp	24	
	CLM 520 180 hp	28	8-18 t/h
	CLM 520 220 hp	32	
	CLM 630 220 hp	36	
	CLM 630 300 hp	40	
	CLM 800 380 hp	44	18-35 t/h
	CLM 935 500 hp	48	
	CLM 1000 500 hp	52	
	COMPACT VERSION	56	
	OPTIONALS	58	
	SPARE PARTS & COLORS	68	



la meccanica

QUALITY, TECHNOLOGY AND TRADITION

COM
PANY

LA MECCANICA SRL WAS FOUNDED IN 1961

and currently has approximately 55 employees, 40 of whom work in production. The production plant covers a surface of approximately 10,000 m².

DIES:

La Meccanica is specialized in the production of dies for the most important brands of pellet mills. 40 years of experience in the production of dies and roller shells guarantee our customer quality and seriousness.

WE GUARANTEE:

- special high quality steels with a high chrome content
- meticulous, extremely precise workmanship
- holes drilled and polished to a mirror finish
- vacuum heat treatments
- minimum ovalization of the die after heat treatment
- testing and control before shipment
- short delivery times.

Our fully automated, fully equipped production plants use avant-garde technologies and produce dies which are exported worldwide. These dies are characterized by their:

- easy placement in production
- high productivity
- long life.

Our dies can be immediately placed into full production because:

- they have perfectly finished holes
- they have undergone a vacuum treatment to eliminate any steel oxidation
- they have undergone approximately 30 minutes of testing before shipment.

Our dies have a long life because:

- they are built of high quality steels with high carbon and chrome contents
- after the heat treatment, they are particularly hard.

MOREOVER:

Delivery times are limited to 4 - 6 weeks.

Our dies have extremely precise, regular holes in a perfect "beehive" arrangement.

Our dies are rectified internally to eliminate ovalization after treatment (maximum degree of ovalization = 0.5 mm).

LA MECCANICA: MACHINERY AND PLANTS

Besides the production of dies, La Meccanica srl also designs and builds machinery and plants.

Design and production are performed in-house, ensuring direct, real-time control over quality.

Our company works mainly in the following sectors:

- feed production
- mills
- dehydrators
- sugar factories
- oil production plants
- plants working organic and organic-mineral fertilizers.

The production schedule covers each individual machine in the pellet production plant: milling, homogenization and pellet production.

Over the years, La Meccanica srl has specialized in the production of pellet mills.

More than 900 units have been installed to date and La Meccanica is present throughout the world.

There are 14 different models of the pellet mills with power ranging from 7.5 kW to 355 kW.

The production program also covers:

- complete feed production plants
- dies for roller pellet mills and spare parts for the milling industry
- pellet cooling systems: vertical, counter-current, horizontal
- crumblers
- hammer mills
- vibrating sieves
- drum greasers
- expanders
- etc.

The Export Manager is Ing. Reffo Roberto who coordinates the marketing network first-hand.

The countries where we are most highly represented are France, Germany, and other European Community countries.

However, we also have 28 distributors or agents worldwide.

Service and assistance: the company has also organized a technical services department to guarantee rapid, highly specialized intervention able to resolve any pellet mill-related problems.



QUALITY IS THE SEARCH FOR PERFECTION



Capacity: 150 - 300 kg/h
Overall dimension: 800 x 1200 x 1930 mm

CLM
200

PELLET MILL



Animal feeds

CLM 200 20hp

THIS PELLET MILL IS EXTREMELY SMALL

but has the same technical features as its larger 'sisters'. In fact, it is equipped with a variable speed metering screw, an independently driven blade conditioner and a press block with ring die installed on a cast-iron base. Created to perform pellet milling tests at university laboratories, it later found application on small farms that prefer to produce their own animal feed.



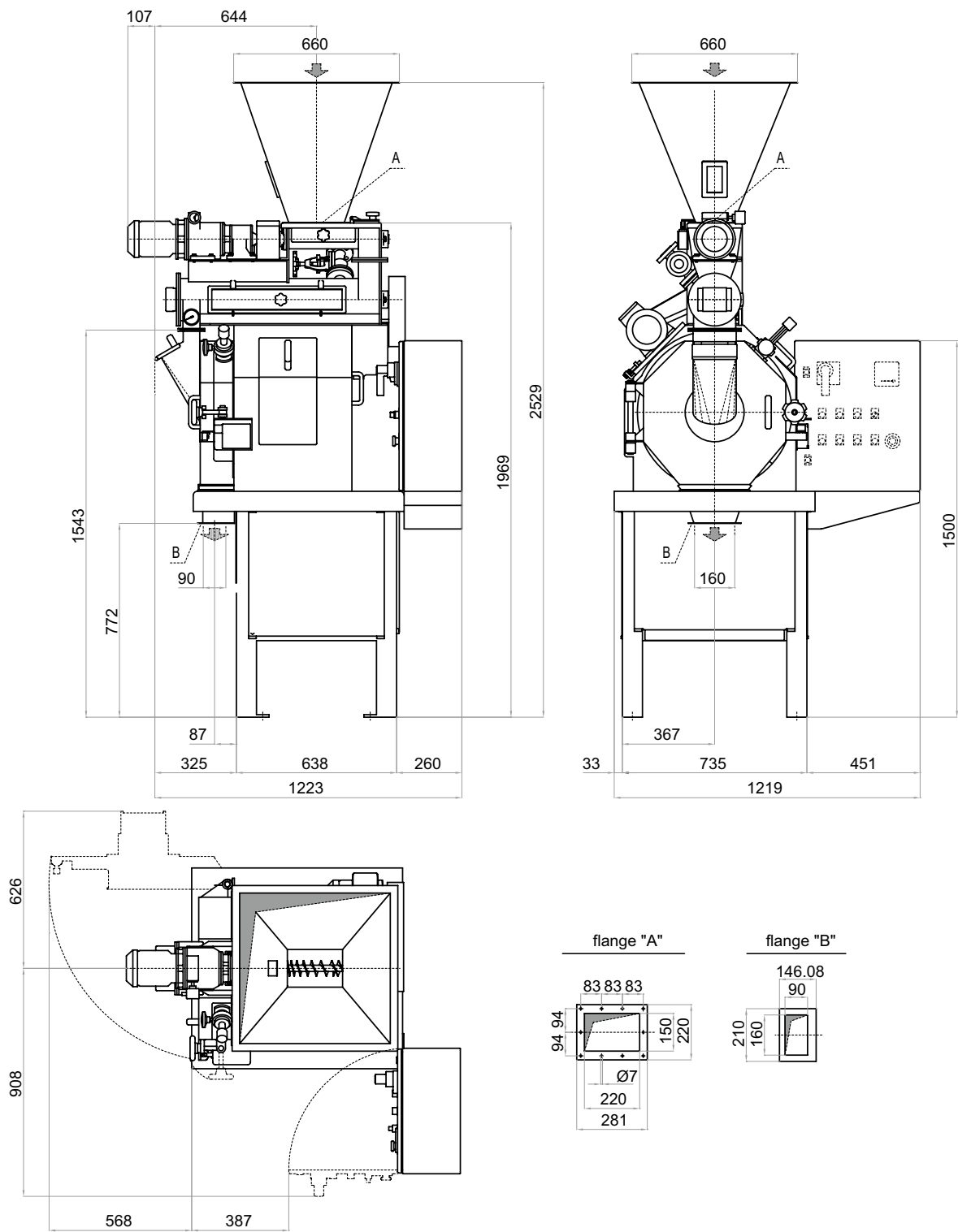
PELLET MILL CLM 200 20hp

PELLET MILL	PRESSE A GRANULAIRE	PRESSA CUBETTATRICE	PRENSA GRANULADORA	CLM 200			
Screw feeder	Alimentateur	Coclea di alimentazione	Cóclea de alimentaciòn	C062			
Diameter	Diamètre	Diametro	Diámetro	mm	62	in	2,44
Motor power	Puissance	Potenza	Potencia motor	kW	0,4	hp	0,5
Flow rate	Capacité	Capacità	Volume	dm³/giro		in³	
				1,34		82	
Speed	Vitesse	Velocità	Velocidad	0-222 rpm			
Conditioner	Conditionneur	Condizionatore	Acondicionator	M160.810			
Diameter	Diamètre	Diametro	Diámetro	mm	160	in	6,3
Lenght	Longeur	Lunghezza	Longitud	mm	810	in	31,9
Volum	Volume	Volume	Volumen	dm³	16,28	ft³	0,6
Motor power	Puissance	Potenza	Potencia motor	kW	0,5	hp	0,7
Pellet mill Bloc	Bloc Presse	Blocco Pressa	Bloque prensa	200			
Main motor power	Puissance moteur principal	Potenza motore principale	Motor Principal	kW		hp	
				11	15	14,96	20,0
Main pulley	Poulie conduit	Puleggia cond.	Polea principal	mm	600	in	23,6
Die speed	Vitesse filiere	Velocità filiera	Velocidad matriz	m/sec	2,4	ft/sec	7,75
Belts	Courroies	Cinghie	Correas	n.4 belts type 5V-950			
Die	Filiere	Trafila	Matriz	Lamec			
Inner diameter	Diamètre int.	Diametro interno	Diámetro int.	mm	200	in	7,87
Working width	Largeur utile	Larghezza utile	Anchura de trabajo	mm	35	in	1,38
Total width	Largeur totale	Larghezza totale	Anchura total	mm	62	in	2,44
Working surface	Superficie	Superficie utile	Superficie útil	dm²	2,20	in²	34,1
Roll type	Galets	Rulli tipo	Rodillos	Lamec 200.035		Lamec	
N. rolls	N. de galets	N. rulli	N. rodillos	2		2	
Diameter	Diamètre	Diametro	Diámetro	mm	96	in	3,78
WEIGHTS	POIDS	PESI	PESOS				
Bloc press	Bloc press	Blocco pressa	Peso del bloque				
Without main motor	Sans moteur principal	Motore principale escluso	Sin el motor principal	kg	415	lb	915
With main motor	Avec moteur principal	Motore principale incluso	Con el motor principal	kg	505	lb	1113
Screw feeder and conditioner	Vis d'Archimède et conditionneur	Coclea di alimentazione e condizionatore	Peso del alimentador y del acondicionador	kg	145	lb	320
Total Weight	Poids Total	Peso totale	Peso total				
Main motor excluded	Moteur principal exclu	Motore principale escluso	Motor principal excluido	kg	553	lb	1219
Main motor included	Moteur principal inclu	Motore principale incluso	Motor principal incluido	kg	653	lb	1439



VERTICAL
VERSION

ANIMAL FEEDS



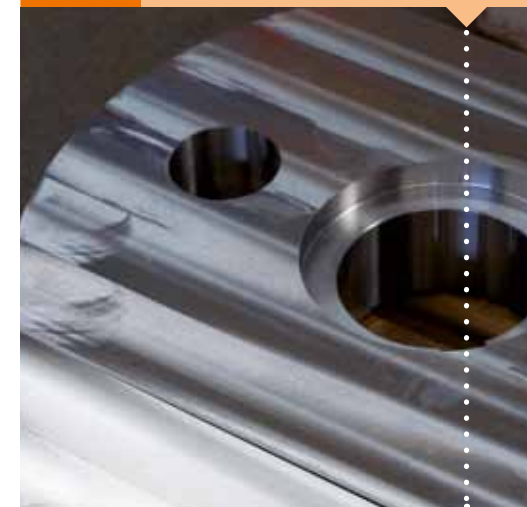
QUALITY IS CUSTOMER SATISFACTION



Capacity: 1,5 - 2,5 T/h
Overall dimension: 1445 x 1440 x 1700 mm

CLM
304

PELLET MILL



Animal feeds

CLM 304 60hp



IN THE 1950'S AND 1960'S

this was the most widely sold model. It is still one of the most interesting models for small production units, particularly in Central America and North Africa. It guarantees high quality pellets even with such difficult products such as fish feed.

The pellet mill can handle two different size dies:

- narrow die, Lamec 304.058 (to work feed which is difficult to pellet)
- wide die, Lamec 304.078 (to work cattle and bird feed).

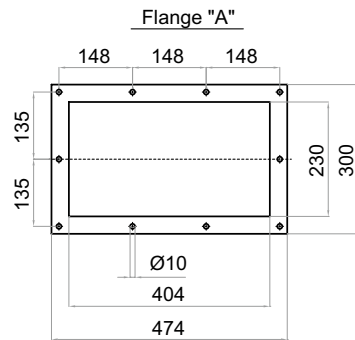
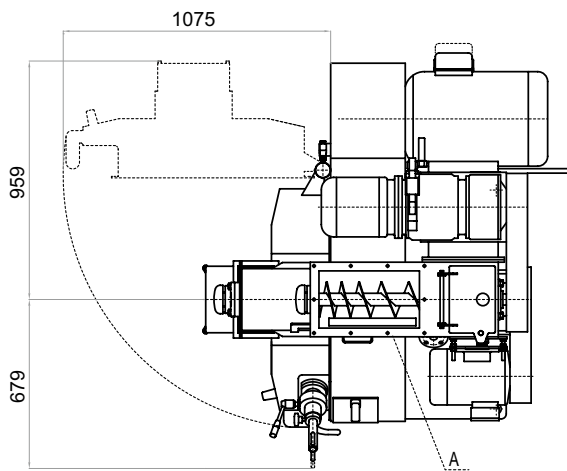
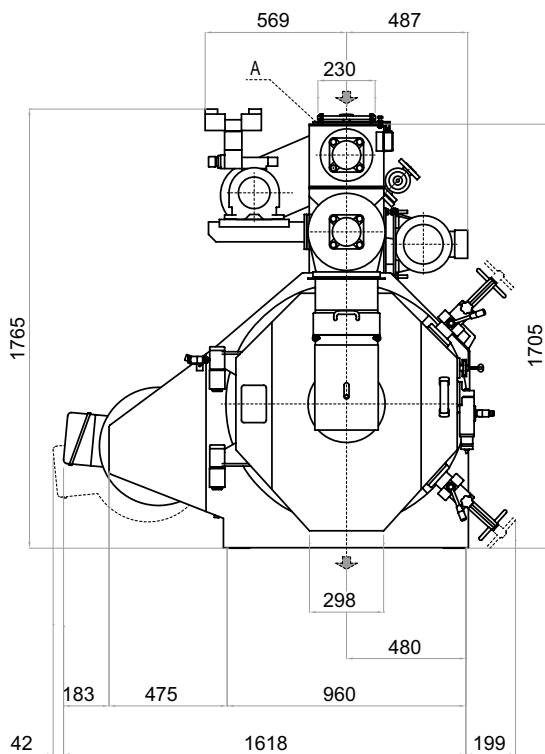
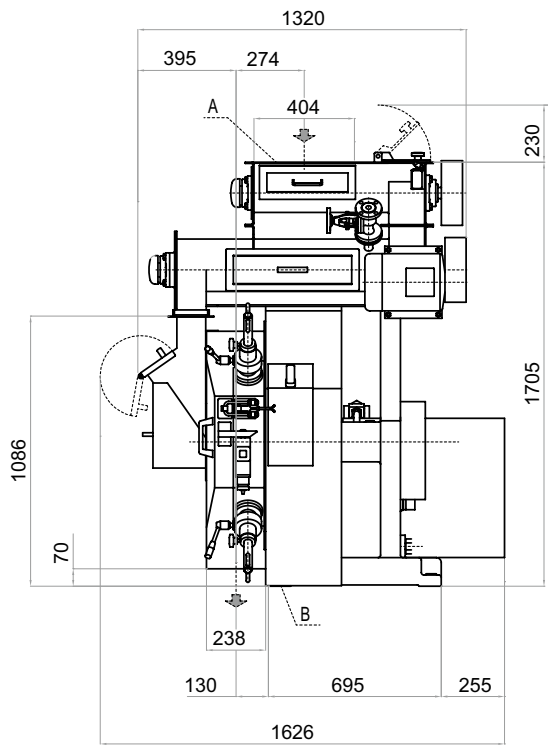
PELLET MILL CLM 304 60hp

PELLET MILL	PRESSE A GRANULAIRE	PRESSA CUBETTATRICE	PRENSA GRANULADORA	CLM 304			
Screw feeder	Alimentateur	Coclea di alimentazione	Còclea de alimentaciòn	C145			
Diameter	Diamètre	Diametro	Diàmetro	mm	145	in	5,71
Motor power	Puissance	Potenza	Potencia motor	kW	1,5	hp	2,0
Flow rate	Capacité	Capacità	Volume	dm³/giro		in³	
				1,34		82	
Speed	Vitesse	Velocità	Velocidad	0-158 rpm			
Conditioner	Conditionneur	Condizionatore	Acondicionator	M 242.1010			
Diameter	Diamètre	Diametro	Diàmetro	mm	242	in	9,5
Lenght	Longeur	Lunghezza	Longitud	mm	1.010	in	39,8
Volum	Volume	Volume	Volumen	dm³	46,43	ft³	1,6
Motor power	Puissance	Potenza	Potencia motor	kW	04:00	hp	0,2
Pellet mill Bloc	Bloc Presse	Blocco Pressa	Bloque prensa	304 P			
Main motor power	Puissance moteur principal	Potenza motore principale	Motor Principal	kW		hp	
				37	44	50	60,0
Main pulley	Poulie conduit	Puleggia cond.	Polea principal	mm	880	in	34,0
Die speed	Vitesse filiere	Velocità filiera	Velocidad matriz	m/sec	6,0	ft/sec	19,7
				m/sec	7,5	ft/sec	24,6
Belts	Courroies	Cinghie	Correas	n.8 belts type 5V-1320			
Die	Filiere	Trafila	Matriz	Lamec 304.058			
Inner diameter	Diamètre int.	Diametro interno	Diàmetro int.	mm	304	in	11,97
Working width	Largeur utile	Larghezza utile	Anchura de trabajo	mm	58	in	2,28
Total width	Largeur totale	Larghezza totale	Anchura total	mm	95	in	3,74
Working surface	Superficie	Superficie utile	Superficie útil	dm²	5,54	in²	85,8
Die	Filiere	Trafila	Matriz	Lamec 304.078			
Inner diameter	Diamètre int.	Diametro interno	Diàmetro int.	mm	304	in	11,97
Working width	Largeur utile	Larghezza utile	Anchura de trabajo	mm	78	in	3,07
Total width	Largeur totale	Larghezza totale	Anchura total	mm	120	in	4,72
Working surface	Superficie	Superficie utile	Superficie útil	dm²	7,45	in²	115,4
Roll type	Galets	Rulli tipo	Rodillos	Lamec 304.058		Lamec 304.078	
N. rolls	N. de galets	N. rulli	N. rodillos	2		2	
Diameter	Diamètre	Diametro	Diámetro	mm	150	in	150
WEIGHTS	POIDS	PESI	PESOS				
Bloc press	Bloc press	Blocco pressa	Peso del bloque				
Without main motor	Sans moteur principal	Motore principale escluso	Sin el motor principal	kg	1085	lb	2390
With main motor	Avec moteur principal	Motore principale incluso	Con el motor principal	kg	1400	lb	3085
Screw feeder and conditioner	Vis d'Archimède et conditionneur	Coclea di alimentazione e condizionatore	Peso del alimentador y del acondicionador	kg	500	lb	1100
Total Weight	Poids Total	Peso totale	Peso total				
Main motor excluded	Moteur principal exclu	Motore principale escluso	Motor principal excluido	kg	1.604	lb	3535
Main motor included	Moteur principal inclu	Motore principale incluso	Motor principal incluido	kg	1.874	lb	4130



HORIZONTAL
VERSION

ANIMAL FEEDS



la meccanica

EXPERIENCE AND TRADITION SERVING QUALITY



Capacity: 2,5 - 5 T/h
Overall dimension: 1545 x 1900 x 1950 mm

CLM
420.
075

PELLET MILL



Animal feeds

CLM 420 75hp



THIS IS A LIGHT, COMPACT VERSION

of the series "420" units and uses interchangeable series 420 spare parts. It can handle power of up to 55 kW (75 hp). It is an excellent model for small feed producers, ensuring high quality pellets. It is the most recent "La Meccanica" product and provides an excellent compromise between price and production capacity.

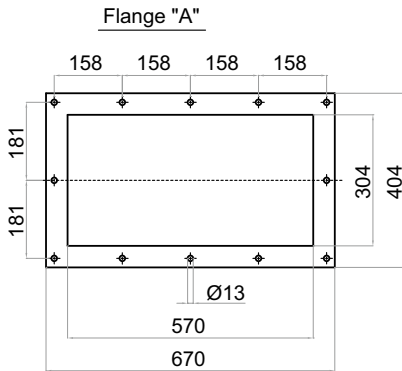
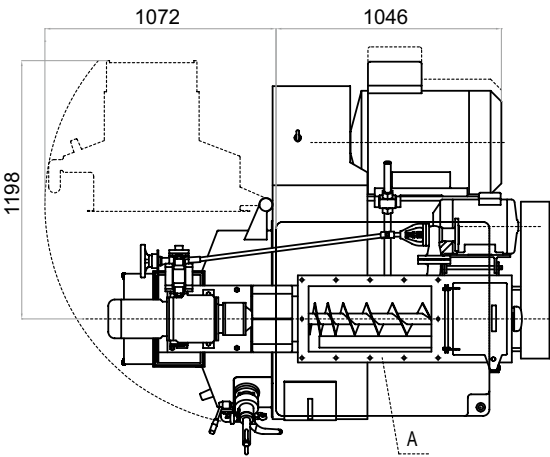
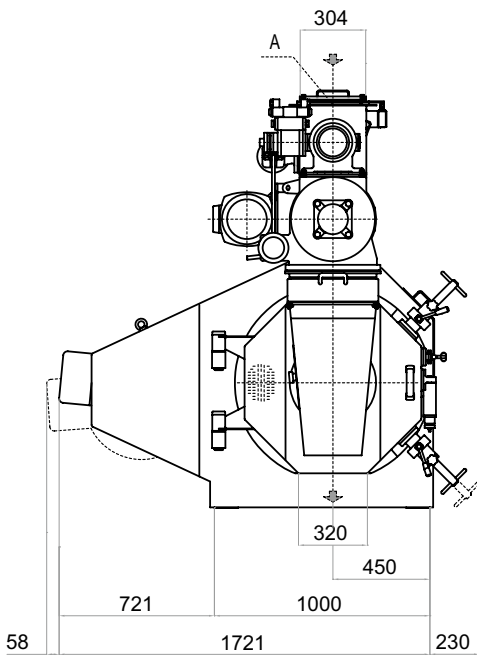
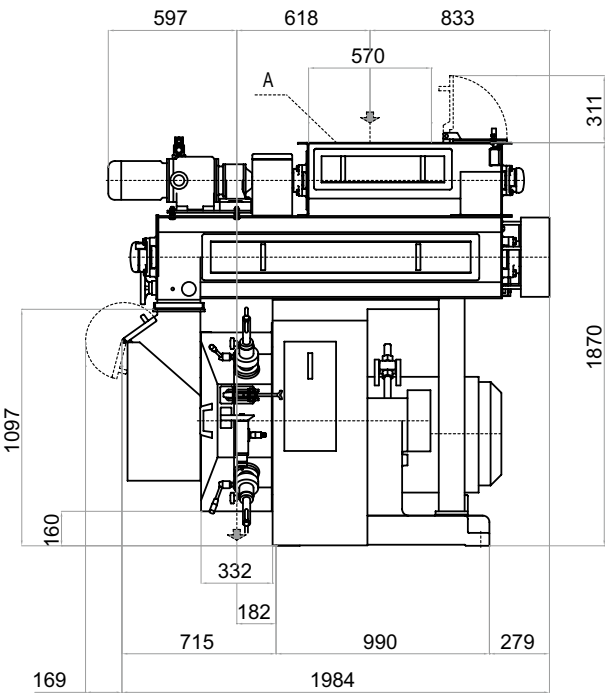
PELLET MILL CLM 420 75hp

PELLET MILL	PRESSE A GRANULAIRE	PRESSA CUBETTATRICE	PRENSA GRANULADORA	CLM 420.075			
Screw feeder	Alimentateur	Coclea di alimentazione	Còclea de alimentaciòn	C145			
Diameter	Diamètre	Diametro	Diàmetro	mm	145	in	5,71
Motor power	Puissance	Potenza	Potencia motor	kW	2,2	hp	3,0
Flow rate	Capacité	Capacità	Volume	dm³/giro		in³	
				1,78		109	
Speed	Vitesse	Velocità	Velocidad	0-250 rpm			
Conditioner	Conditionneur	Condizionatore	Acondicionator	M305.1600			
Diameter	Diamètre	Diametro	Diàmetro	mm	305	in	12,0
Lenght	Longeur	Lunghezza	Longitud	mm	1.600	in	63,0
Volum	Volume	Volume	Volumen	dm³	116,84	ft³	4,1
Motor power	Puissance	Potenza	Potencia motor	kW	5,5	hp	7,5
Pellet mill Bloc	Bloc Presse	Blocco Pressa	Bloque prensa	420			
Main motor power	Puissance moteur principal	Potenza motore principale	Motor Principal	kW		hp	
				37	55	50,32	74,0
Main pulley	Poulie conduit	Puleggia cond.	Polea principal	mm	820	in	32,28
Die speed	Vitesse filiere	Velocità filiera	Velocidad matriz	m/sec	7,5	ft/sec	24,6
Belts	Courroies	Cinghie	Correas	n.8 belts type 5V-1320			
Die	Filiere	Trafila	Matriz	Lamec 420.108			
Inner diameter	Diamètre int.	Diametro interno	Diàmetro int.	mm	420	in	16,54
Working width	Largeur utile	Larghezza utile	Anchura de trabajo	mm	108	in	4,25
Total width	Largeur totale	Larghezza totale	Anchura total	mm	152	in	5,98
Working surface	Superficie	Superficie utile	Superficie útil	dm²	14,24	in²	220,8
Roll type	Galets	Rulli tipo	Rodillos	Lamec 420.108		Lamec	
N. rolls	N. de galets	N. rulli	N. rodillos	2		2	
Diameter	Diamètre	Diametro	Diàmetro	mm	206	in	8,11
WEIGHTS	POIDS	PESI	PESOS				
Bloc press	Bloc press	Blocco pressa	Peso del bloque				
Without main motor	Sans moteur principal	Motore principale escluso	Sin el motor principal	kg	1.167	lb	2572
With main motor	Avec moteur principal	Motore principale incluso	Con el motor principal	kg	1.620	lb	3570
Screw feeder and conditioner	Vis d'Archimède et conditionneur	Coclea di alimentazione e condizionatore	Peso del alimentador y del acondicionador	kg	450	lb	992
Total Weight	Poids Total	Peso totale	Peso total				
Main motor excluded	Moteur principal exclu	Motore principale escluso	Motor principal excluido	kg	1.620	lb	3570
Main motor included	Moteur principal inclu	Motore principale incluso	Motor principal incluido	kg	2070	lb	4562



HORIZONTAL
VERSION

ANIMAL FEEDS





la meccanica

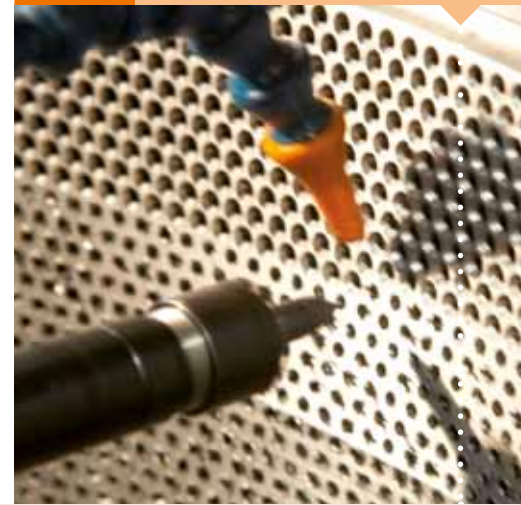
QUALITY IS ADDED VALUE FOR YOUR MONEY



Capacity: 4 - 6 T/h
Overall dimension: 1545 x 2695 x 2050 mm

CLM
420.
100

PELLET MILL



Animal feeds

CLM 420 100hp

THIS IS THE INTERMEDIATE VERSION

of the series "420" units and uses interchangeable series 420 spare parts. It can handle power of up to 90 kW (125 hp). It is an excellent model for small feed producers, ensuring high quality pellets. It is often used for the production of the fish feed.

The pellet mill can handle two different size dies:

- narrow die, Lamec 420.108 (to work feed which is difficult to pellet)
- wide die, Lamec 420.138 (to work cattle and bird feed).



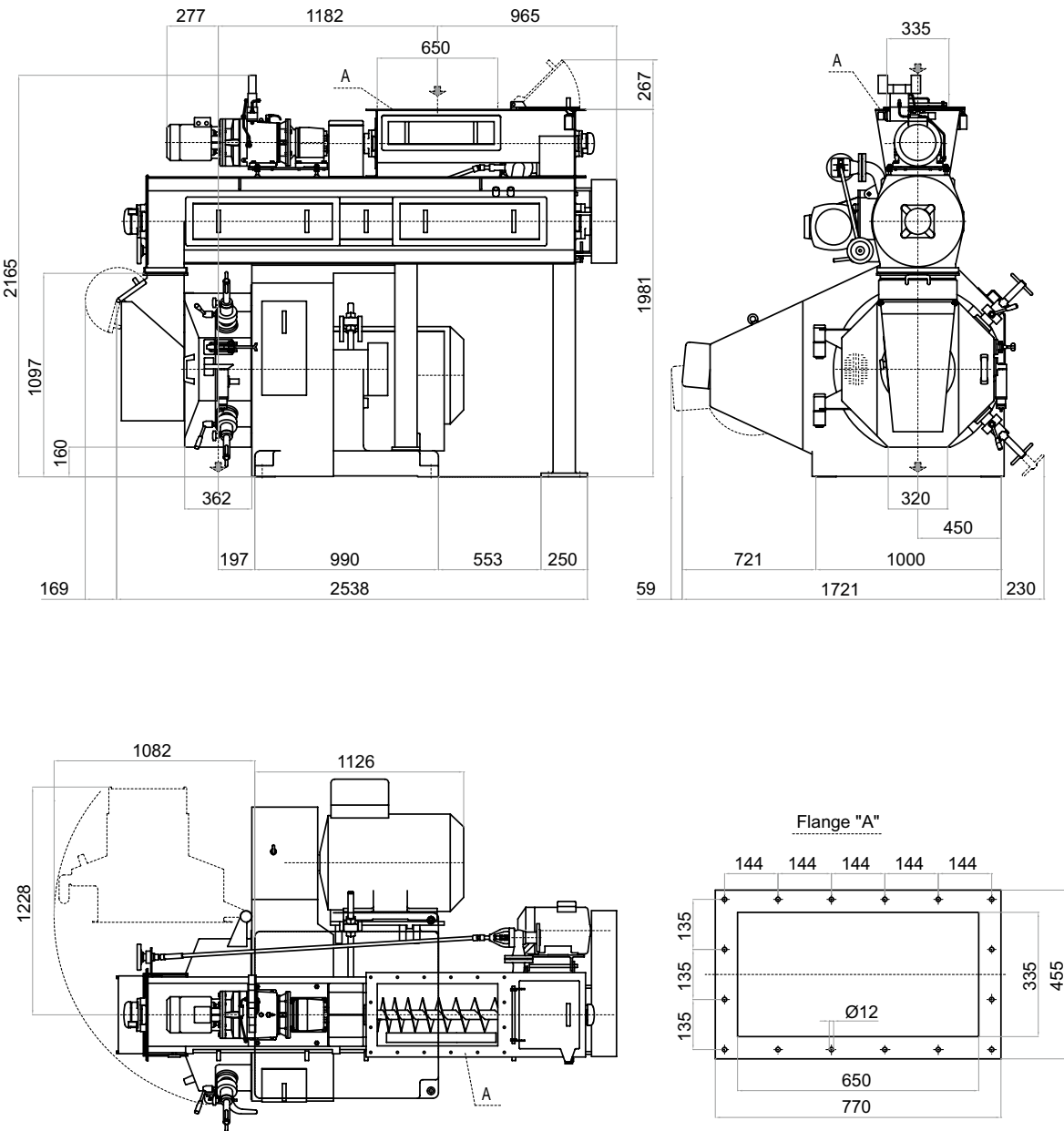
PELLET MILL CLM 420 100hp

PELLET MILL	PRESSE A GRANULAIRE	PRESSA CUBETTATRICE	PRENSA GRANULADORA	CLM 420.100			
Screw feeder	Alimentateur	Coclea di alimentazione	Còclea de alimentaciòn	C180			
Diameter	Diamètre	Diametro	Diàmetro	mm	180	in	7,09
Motor power	Puissance	Potenza	Potencia motor	kW	2,2	hp	3,0
Flow rate	Capacité	Capacità	Volume	dm³/giro		in³	
				2,2		134	
				2,53		154	
				3,27		200	
				4,1		250	
Speed	Vitesse	Velocità	Velocidad	0-158 rpm			
Conditioner	Conditionneur	Condizionatore	Acondicionator	M 400.2310			
Diameter	Diamètre	Diametro	Diàmetro	mm	400	in	15,7
Lenght	Longeur	Lunghezza	Longitud	mm	2310	in	90,9
Volum	Volume	Volume	Volumen	dm³	290,1	ft³	10,2
Motor power	Puissance	Potenza	Potencia motor	kW	9	hp	12,2
Pellet mill Bloc	Bloc Presse	Blocco Pressa	Bloque prensa	420.100			
Main motor power	Puissance moteur principal	Potenza motore principale	Motor Principal	kW		hp	
				90	110	122,4	149,0
Main pulley	Poulie conduit	Puleggia cond.	Polea principal	mm	820	in	32,0
Die speed	Vitesse filiere	Velocità filiera	Velocidad matriz	m/sec	6,0	ft/sec	19,7
				m/sec	7,5	ft/sec	24,6
Belts	Courroies	Cinghie	Correas	n.12 belts type 5V-1600			
Die	Filiere	Trafila	Matriz	Lamec 420.108			
Inner diameter	Diamètre int.	Diametro interno	Diàmetro int.	mm	420	in	16,54
Working width	Largeur utile	Larghezza utile	Anchura de trabajo	mm	108	in	4,25
Total width	Largeur totale	Larghezza totale	Anchura total	mm	152	in	5,98
Working surface	Superficie	Superficie utile	Superficie útil	dm²	14,24	in²	220,8
Die	Filiere	Trafila	Matriz	Lamec 420.138			
Inner diameter	Diamètre int.	Diametro interno	Diàmetro int.	mm	420	in	16,54
Working width	Largeur utile	Larghezza utile	Anchura de trabajo	mm	138	in	5,43
Total width	Largeur totale	Larghezza totale	Anchura total	mm	182	in	7,17
Working surface	Superficie	Superficie utile	Superficie útil	dm²	18,20	in²	282,1
Roll type	Galets	Rulli tipo	Rodillos	Lamec 420.108		Lamec 420.138	
N. rolls	N. de galets	N. rulli	N. rodillos	2		2	
Diameter	Diamètre	Diametro	Diàmetro	mm	206	in	206
WEIGHTS	POIDS	PESI	PESOS				
Bloc press	Bloc press	Blocco pressa	Peso del bloque				
Without main motor	Sans moteur principal	Motore principale escluso	Sin el motor principal	kg	1.167	lb	2572
With main motor	Avec moteur principal	Motore principale incluso	Con el motor principal	kg	2.299	lb	5067
Screw feeder and conditioner	Vis d'Archimède et conditionneur	Coclea di alimentazione e condizionatore	Peso del alimentador y del acondicionador	kg	806	lb	1776
Total Weight	Poids Total	Peso totale	Peso total				
Main motor excluded	Moteur principal exclu	Motore principale escluso	Motor principal excluido	kg	1.923	lb	4238
Main motor included	Moteur principal inclu	Motore principale incluso	Motor principal incluido	kg	3105	lb	6843



HORIZONTAL
VERSION

ANIMAL FEEDS



QUALITY IS RELIABILITY AND SECURITY



Capacity: 6 - 8 T/h
Overall dimension: 1810 x 2695 x 2100 mm

PELLET MILL

CLM
420.
150



Animal feeds

CLM 420 150hp

THIS IS THE HEAVY DUTY VERSION

of the series "420" units and uses interchangeable series 420 spare parts. It can handle a power of up to 110 kW (150 hp). It is an excellent model for small feed producers, ensuring high quality pellets. In large complexes, it is often used on lines for the production of small batches of special feed.

The pellet mill can handle two different size dies:

- narrow die, Lamec 420.108 (to work feed which is difficult to pellet)
- wide die, Lamec 420.138 (to work cattle and bird feed).



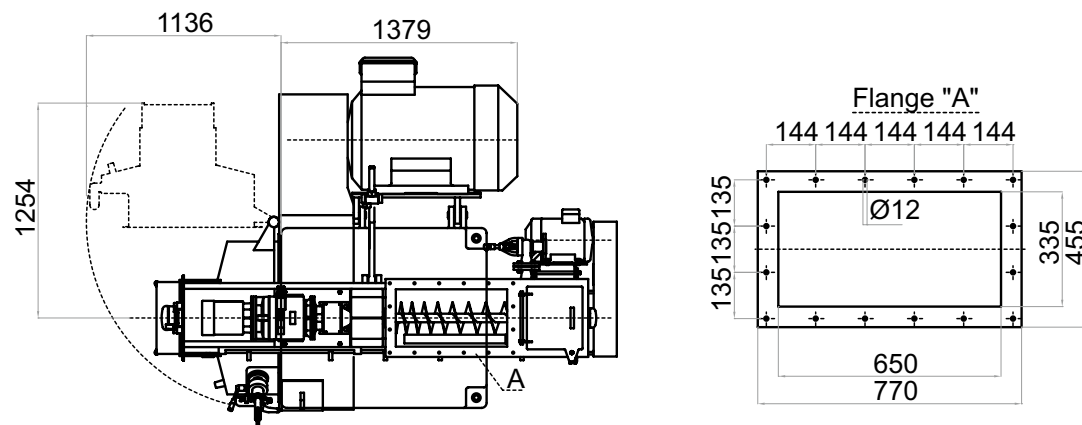
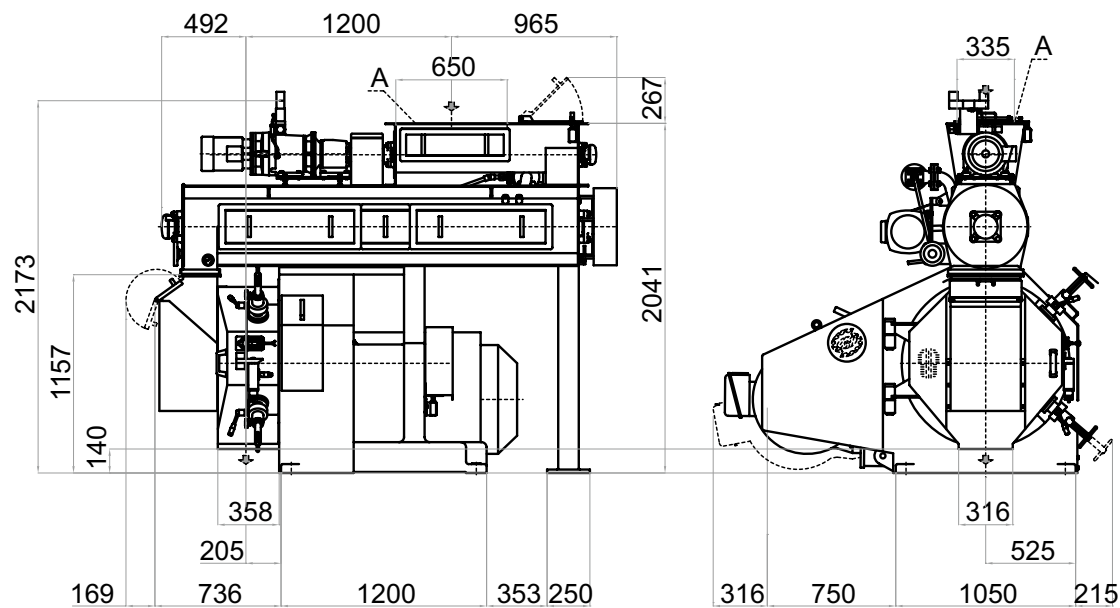
PELLET MILL CLM 420 150hp

PELLET MILL	PRESSE A GRANULAIRE	PRESSA CUBETTATRICE	PRENSA GRANULADORA	CLM 420.100			
Screw feeder	Alimentateur	Coclea di alimentazione	Còclea de alimentaciòn	C180			
Diameter	Diamètre	Diametro	Diàmetro	mm	180	in	7,09
Motor power	Puissance	Potenza	Potencia motor	kW	2,2	hp	3,0
Flow rate	Capacité	Capacità	Volume	dm³/giro	in³		
				2,2	134		
				2,53	154		
				3,27	200		
Speed	Vitesse	Velocità	Velocidad	0-158 rpm			
Conditioner	Conditionneur	Condizionatore	Acondicionator	M 400.1830			
Diameter	Diamètre	Diametro	Diàmetro	mm	400	in	15,7
Lenght	Longeur	Lunghezza	Longitud	mm	1830	in	72,0
Volum	Volume	Volume	Volumen	dm³	229,8	ft³	8,1
Motor power	Puissance	Potenza	Potencia motor	kW	7,5	hp	10,2
Conditioner	Conditionneur	Condizionatore	Acondicionator	M400.2310			
Diameter	Diamètre	Diametro	Diàmetro	mm	400	in	15,7
Lenght	Longeur	Lunghezza	Longitud	mm	2310	in	90,9
Volum	Volume	Volume	Volumen	dm³	290,1	ft³	10,2
Motor power	Puissance	Potenza	Potencia motor	kW	9	hp	12,2
Pellet mill Bloc	Bloc Presse	Blocco Pressa	Bloque prensa	420			
Main motor power	Puissance moteur principal	Potenza motore principale	Motor Principal	90 kW	110	122,4 hp	149,0
Main pulley	Poulie conduit	Puleggia cond.	Polea principal	mm	960	in	37,0
Die speed	Vitesse filiere	Velocità filiera	Velocidad matriz	m/sec	6,0	ft/sec	19,7
Belts	Courroies	Cinghie	Correas	m/sec	7,5	ft/sec	24,6
Die	Filiere	Trafila	Matriz	n.15 belts type 5V-1600			
Die	Filiere	Trafila	Matriz	Lamec 420.108			
Inner diameter	Diamètre int.	Diametro interno	Diàmetro int.	mm	420	in	16,54
Working width	Largeur utile	Larghezza utile	Anchura de trabajo	mm	108	in	4,25
Total width	Largeur totale	Larghezza totale	Anchura total	mm	152	in	5,98
Working surface	Superficie	Superficie utile	Superficie útil	dm²	14,24	in²	220,8
Die	Filiere	Trafila	Matriz	Lamec 420.138			
Inner diameter	Diamètre int.	Diametro interno	Diàmetro int.	mm	420	in	16,54
Working width	Largeur utile	Larghezza utile	Anchura de trabajo	mm	138	in	5,43
Total width	Largeur totale	Larghezza totale	Anchura total	mm	182	in	7,17
Working surface	Superficie	Superficie utile	Superficie útil	dm²	18,20	in²	282,1
Roll type	Galets	Rulli tipo	Rodillos	Lamec 420.108		Lamec 420.138	
N. rolls	N. de galets	N. rulli	N. rodillos	2		2	
Diameter	Diamètre	Diametro	Diàmetro	mm	206	in	206
WEIGHTS	POIDS	PESI	PESOS				
Bloc press	Bloc press	Blocco pressa	Peso del bloque				
Without main motor	Sans moteur principal	Motore principale escluso	Sin el motor principal	kg	1845	lb	4066
With main motor	Avec moteur principal	Motore principale incluso	Con el motor principal	kg	2275	lb	5014
Screw feeder and conditioner	Vis d'Archimède et conditionneur	Coclea di alimentazione e condizionatore	Peso del alimentador y del acondicionador	kg	806	lb	1776
Total Weight	Poids Total	Peso totale	Peso total				
Main motor excluded	Moteur principal exclu	Motore principale escluso	Motor principal excluido	kg	2651	lb	5843
Main motor included	Moteur principal inclu	Motore principale incluso	Motor principal incluido	kg	3531	lb	7782



HORIZONTAL
VERSION

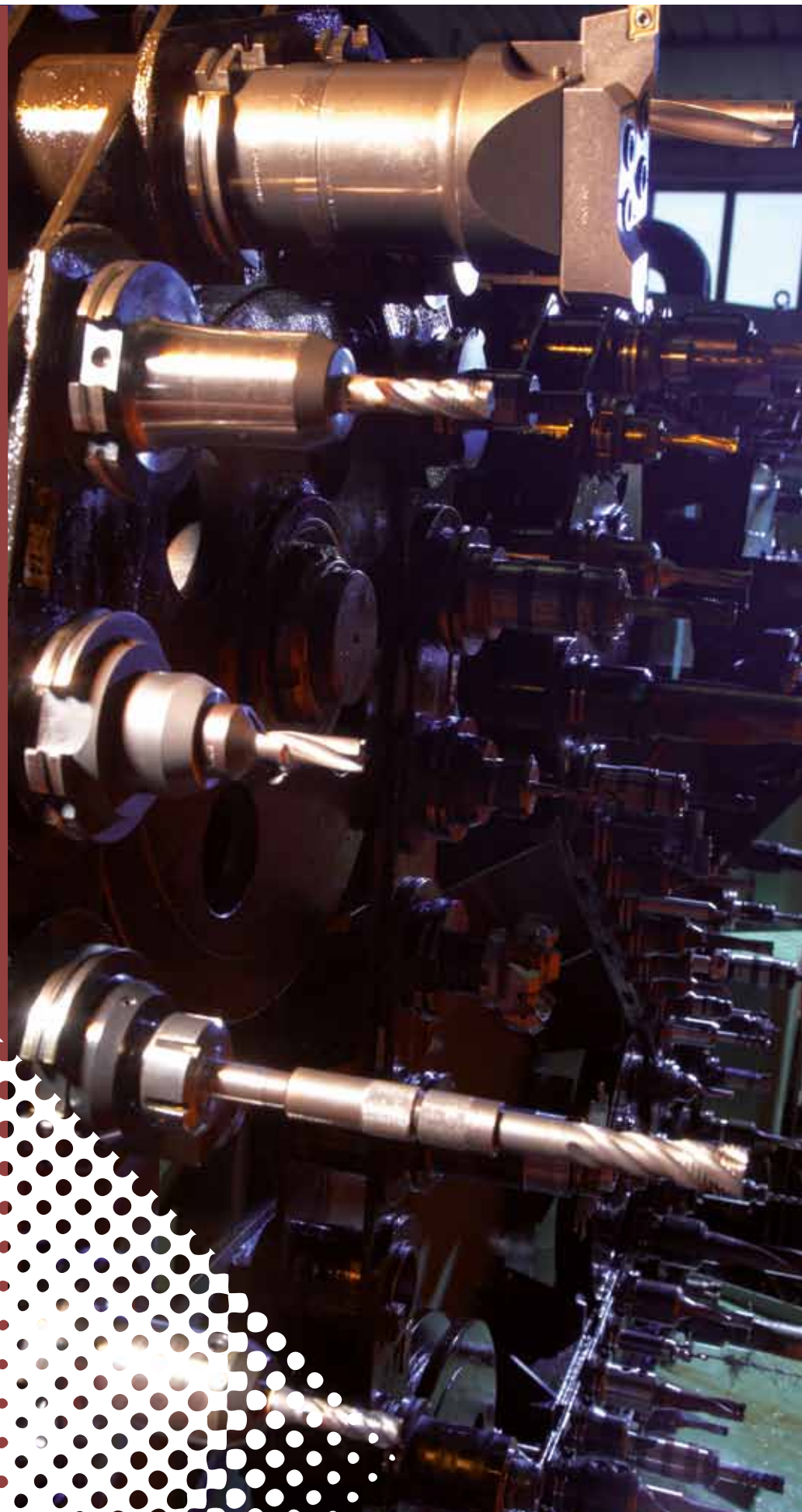
ANIMAL FEEDS





la meccanica

QUALITY IS RESEARCH AND DEVELOPMENT



Capacity: 8 - 10 T/h
Overall dimension: 1945 x 2605 x 2100 mm

CLM
520.
180

PELLET MILL



Animal feeds

CLM 520 180hp



THIS RELATIVELY NEW MODEL,

designed in the early 1990's, has been quite successful thanks to its quality/price ratio. It is an excellent machine for the production of chicken feed. This model is part of the series "520" units and uses interchangeable series 520 spare parts. It can be fit with a narrow die, Lamec 520.138 (for working extremely fibrous feed), or a wide die, Lamec 520.170 (for working cereal-rich feed).

PELLET MILL CLM 520 180hp

PELLET MILL	PRESSE A GRANULAIRE	PRESSA CUBETTATRICE	PRENSA GRANULADORA	CLM 520.180			
Screw feeder	Alimentateur	Coclea di alimentazione	Còclea de alimentaciòn	C180			
Diameter	Diamètre	Diametro	Diàmetro	mm	180	in	7,09
Motor power	Puissance	Potenza	Potencia motor	kW	2,2	hp	3,0
Flow rate	Capacité	Capacità	Volume	dm³/giro		in³	
				2,53		154	
				3,27		200	
				4,1		250	
Speed	Vitesse	Velocità	Velocidad	0-158 rpm			
Conditioner	Conditionneur	Condizionatore	Acondicionator	M 400.2310			
Diameter	Diamètre	Diametro	Diàmetro	mm	400	in	15,7
Lenght	Longeur	Lunghezza	Longitud	mm	2310	in	90,9
Volum	Volume	Volume	Volumen	dm³	290,1	ft³	10,2
Motor power	Puissance	Potenza	Potencia motor	kW	9	hp	12,2
Pellet mill Bloc	Bloc Presse	Blocco Pressa	Bloque prensa	520			
Main motor power	Puissance moteur principal	Potenza motore principale	Motor Principal	kW		hp	
				110	132	149,6	179,0
Main pulley	Poulie conduit	Puleggia cond.	Polea principal	mm	960	in	37,0
Die speed	Vitesse filiere	Velocità filiera	Velocidad matriz	m/sec	6,0	ft/sec	19,7
				m/sec	7,5	ft/sec	24,6
Belts	Courroies	Cinghie	Correas	n.15 belts type 5V-1600			
Die	Filiere	Trafila	Matriz	Lamec 520.138			
Inner diameter	Diamètre int.	Diametro interno	Diàmetro int.	mm	520	in	20,47
Working width	Largeur utile	Larghezza utile	Anchura de trabajo	mm	138	in	5,43
Total width	Largeur totale	Larghezza totale	Anchura total	mm	182	in	7,17
Working surface	Superficie	Superficie utile	Superficie útil	dm²	22,53	in²	349,3
Die	Filiere	Trafila	Matriz	Lamec 520.170			
Inner diameter	Diamètre int.	Diametro interno	Diàmetro int.	mm	520	in	20,47
Working width	Largeur utile	Larghezza utile	Anchura de trabajo	mm	170	in	6,69
Total width	Largeur totale	Larghezza totale	Anchura total	mm	214	in	8,43
Working surface	Superficie	Superficie utile	Superficie útil	dm²	27,76	in²	430,2
Roll type	Galets	Rulli tipo	Rodillos	Lamec 520.138		Lamec 520.170	
N. rolls	N. de galets	N. rulli	N. rodillos	2		2	
Diameter	Diamètre	Diametro	Diàmetro	mm	250	in	250
WEIGHTS	POIDS	PESI	PESOS				
Bloc press	Bloc press	Blocco pressa	Peso del bloque				
Without main motor	Sans moteur principal	Motore principale escluso	Sin el motor principal	kg	2.719	lb	5993
With main motor	Avec moteur principal	Motore principale incluso	Con el motor principal	kg	3.669	lb	8086
Screw feeder and conditioner	Vis d'Archimède et conditionneur	Coclea di alimentazione e condizionatore	Peso del alimentador y del acondicionador	kg	806	lb	1776
Total Weight	Poids Total	Peso totale	Peso total				
Main motor excluded	Moteur principal exclu	Motore principale escluso	Motor principal excluido	kg	3322	lb	7322
Main motor included	Moteur principal inclu	Motore principale incluso	Motor principal incluido	kg	4202	lb	9261

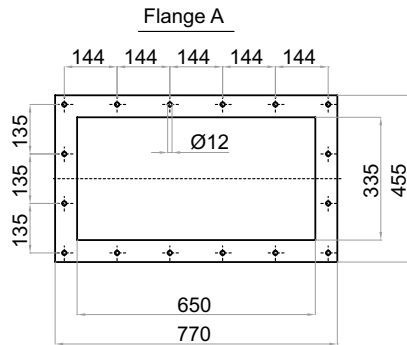
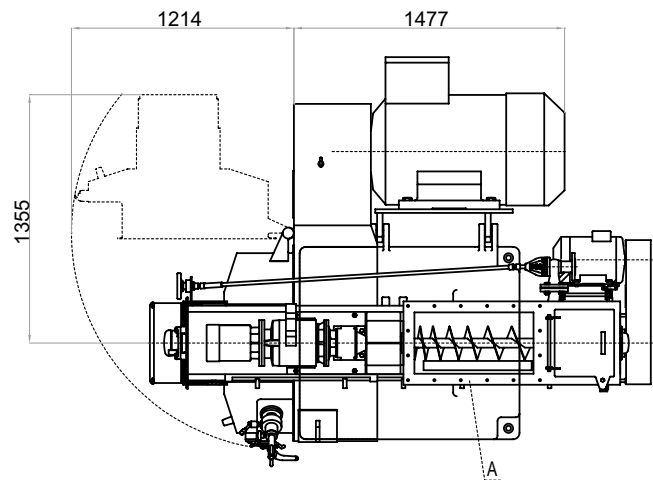
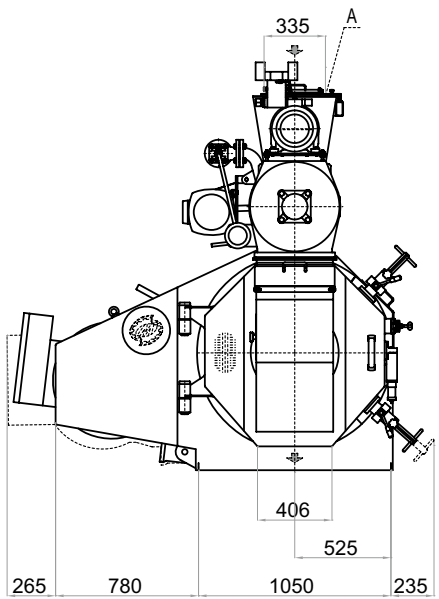
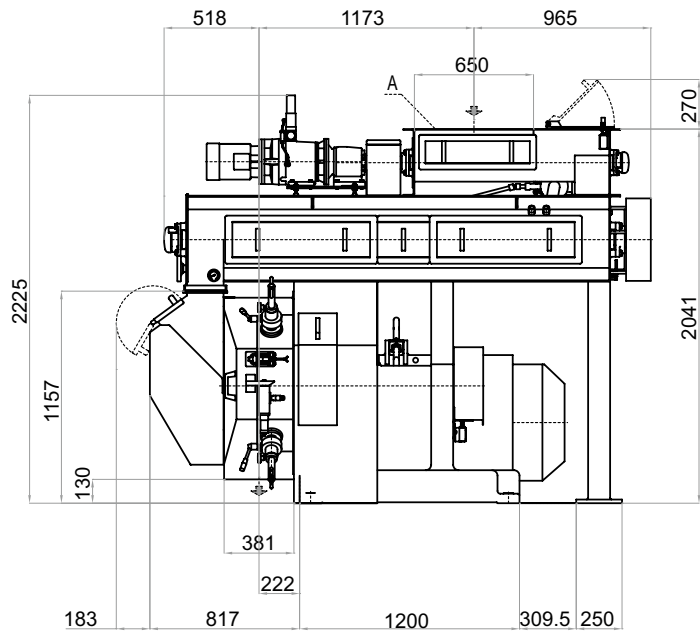


la meccanica



HORIZONTAL
VERSION

ANIMAL FEEDS



QUALITY IS ONGOING IMPROVEMENT



Capacity: 8 - 10 T/h
Overall dimension: 2140 x 2475 x 2470 mm

CLM
520.
220

PELLET MILL



Animal feeds

CLM 520 220hp

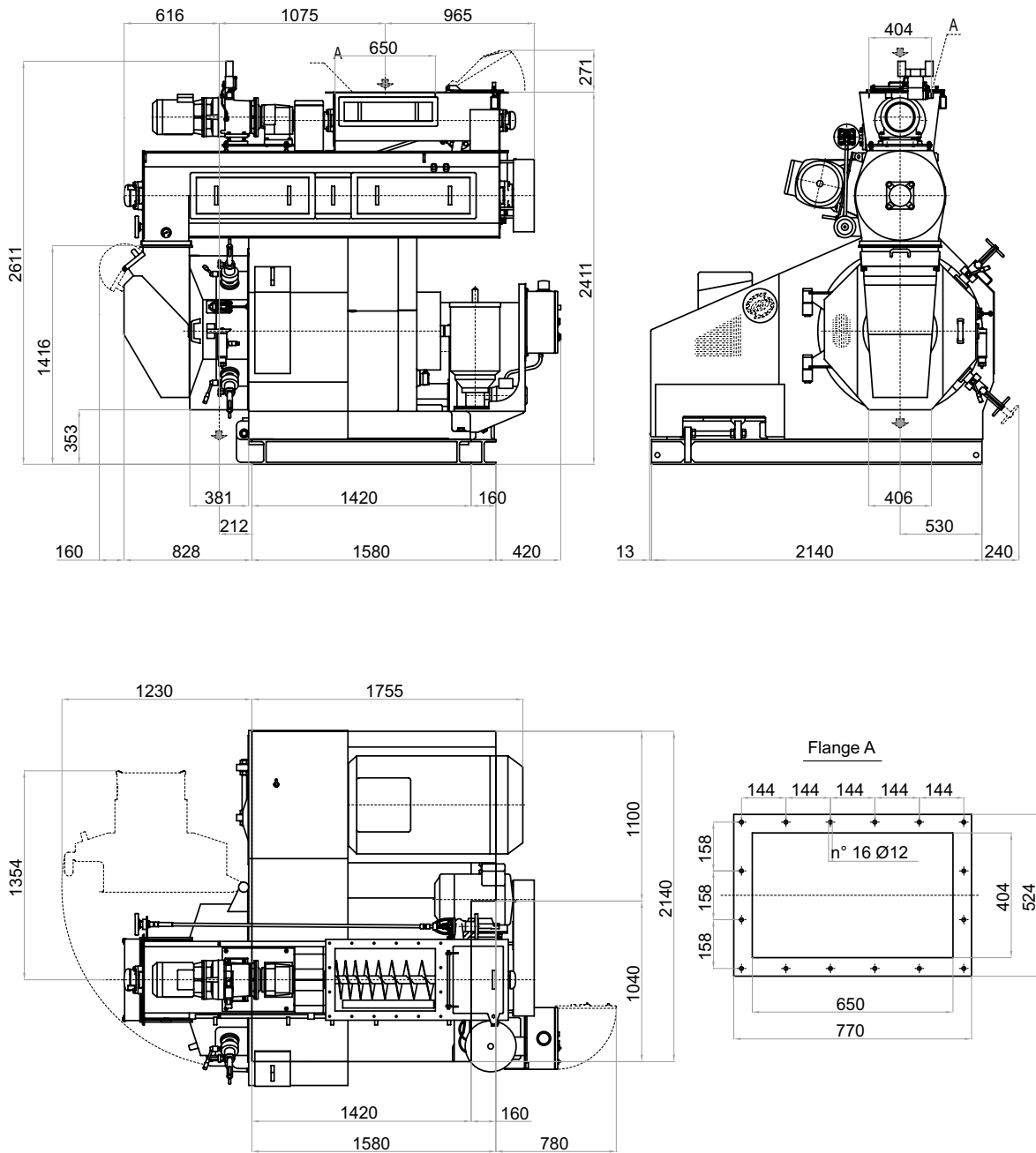


THIS MODEL IS PART OF THE SERIES

"520" units and uses interchangeable series 520 spare parts. It is the evolution of the CLM 520.180, redesigned to handle higher power (up to 160 kW) in the production of even fiberrich formulas. It is, therefore, a heavier version of the previous model and, thanks to its under-base, can be used with larger motors. It can be fit with a narrow die, Lamec 520.138 (for working extremely fibrous feed), or a wide die, Lamec 520.170 (for working cereal-rich feed). A "COMPACT" model of this mill is also available which is smaller and requires less space.

PELLET MILL CLM 520 220hp

PELLET MILL	PRESSE A GRANULAIRE	PRESSA CUBETTATRICE	PRENSA GRANULADORA	CLM 520.220			
Screw feeder	Alimentateur	Coclea di alimentazione	Còclea de alimentaciòn	C245			
Diameter	Diamètre	Diametro	Diàmetro	mm	245	in	9,65
Motor power	Puissance	Potenza	Potencia motor	kW	4,0	hp	5,4
Flow rate	Capacité	Capacità	Volume	dm³/giro		in³	
				4,51		275	
				5,9		360	
				7,9		482	
Speed	Vitesse	Velocità	Velocidad	0-158 rpm			
Conditioner	Conditionneur	Condizionatore	Acondicionator	M500.2310			
Diameter	Diamètre	Diametro	Diàmetro	mm	500	in	19,7
Lenght	Longeur	Lunghezza	Longitud	mm	2310	in	90,9
Volum	Volume	Volume	Volumen	dm³	453,3	ft³	16,0
Motor power	Puissance	Potenza	Potencia motor	kW	11	hp	15,0
Pellet mill Bloc	Bloc Presse	Blocco Pressa	Bloque prensa	520			
Main motor power	Puissance moteur principal	Potenza motore principale	Motor Principal	kW		hp	
				132 - 160		217,6	
Main pulley	Poulie conduit	Puleggia cond.	Polea principal	mm	960	in	37,8
				mm	1105	in	43,5
Die speed	Vitesse filiere	Velocità filiera	Velocidad matriz	m/sec	6,0	ft/sec	19,7
				m/sec	7,5	ft/sec	24,6
Belts	Courroies	Cinghie	Correas	n.15 belts type 5V-1800/2000 vertical			
Die	Filiere	Trafila	Matriz	Lamec 520.138			
Inner diameter	Diamètre int.	Diametro interno	Diàmetro int.	mm	520	in	20,47
Working width	Largeur utile	larghezza utile	Anchura de trabajo	mm	138	in	5,43
Total width	Largeur totale	larghezza totale	Anchura total	mm	182	in	7,17
Working surface	Superficie	Superficie utile	Superficie útil	dm²	22,53	in²	349,3
Die	Filiere	Trafila	Matriz	Lamec 520.170			
Inner diameter	Diamètre int.	Diametro interno	Diàmetro int.	mm	520	in	20,47
Working width	Largeur utile	larghezza utile	Anchura de trabajo	mm	170	in	6,69
Total width	Largeur totale	larghezza totale	Anchura total	mm	214	in	8,43
Working surface	Superficie	Superficie utile	Superficie útil	dm²	27,76	in²	430,2
Roll type	Galets	Rulli tipo	Rodillos	Lamec 520.138		Lamec 520.170	
N. rolls	N. de galets	N. rulli	N. rodillos	2		2	
Diameter	Diamètre	Diametro	Diàmetro	mm	250	in	250
WEIGHTS	POIDS	PESI	PESOS				
Bloc press	Bloc press	Blocco pressa	Peso del bloque				
Without main motor	Sans moteur principal	Motore principale escluso	Sin el motor principal	kg	4.134	lb	9111
With main motor	Avec moteur principal	Motore principale incluso	Con el motor principal	kg	5.404	lb	11910
Screw feeder and conditioner	Vis d'Archimède et conditionneur	Coclea di alimentazione e condizionatore	Peso del alimentador y del acondicionador	kg	1345	lb	2964
Total Weight	Poids Total	Peso totale	Peso total				
Main motor excluded	Moteur principal exclu	Motore principale escluso	Motor principal excluido	kg	5200	lb	11461
Main motor included	Moteur principal inclu	Motore principale incluso	Motor principal incluido	kg	6400	lb	14106



QUALITY MEANS SAFEGUARDING THE CUSTOMER



Capacity: 10 - 15 T/h
Overall dimension: 2150 x 2650 x 2700 mm
(compact model: 1540 x 2.550 x 2720 mm)

CLM
630.
220

PELLET MILL



Animal feeds

CLM 630 220hp

THIS MODEL IS PART OF THE SERIES

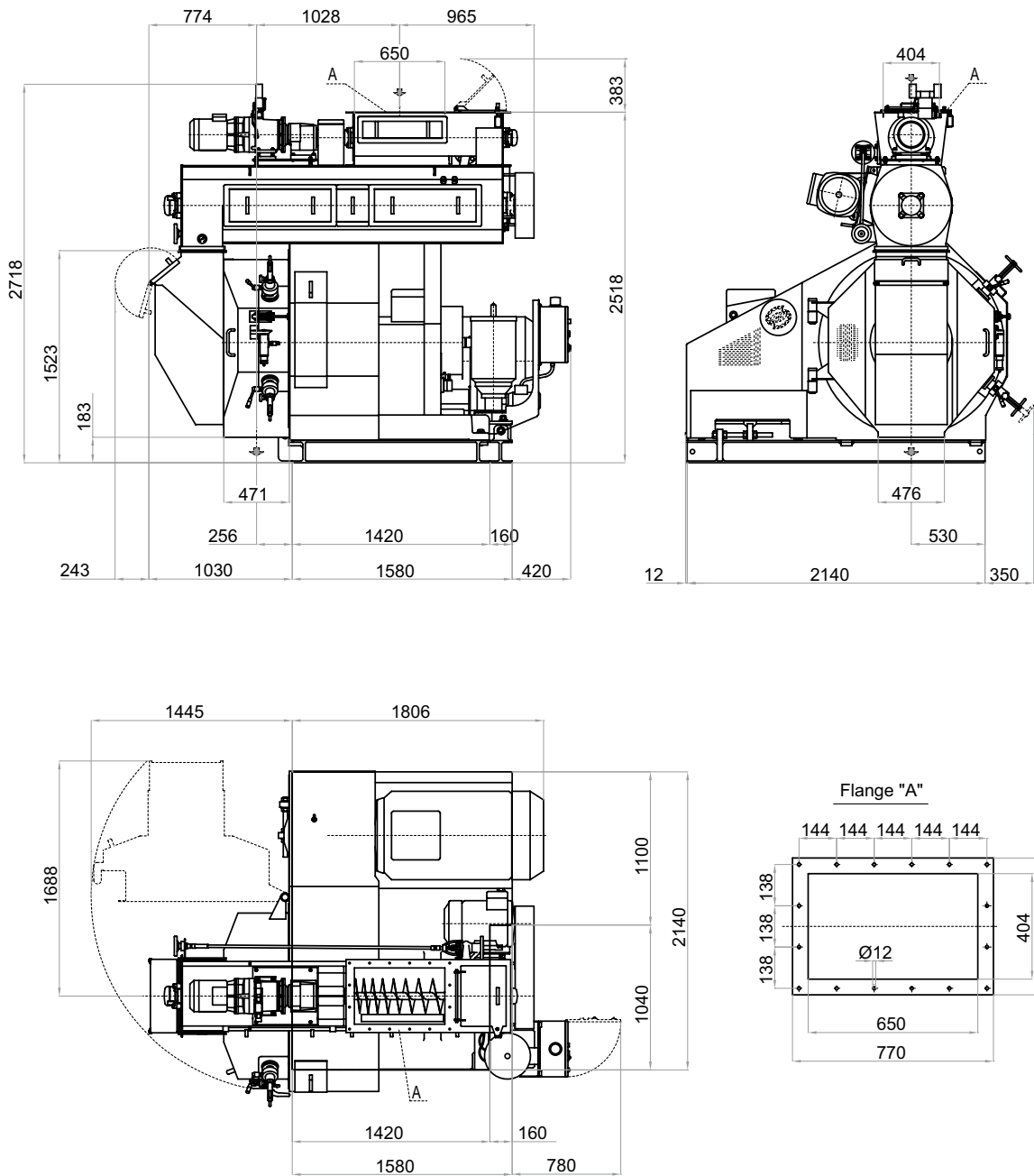
"630" units and uses interchangeable series 630 spare parts. It can handle motors of up to 160 kW (220 hp). Its quality/price ratio makes it an excellent choice for use in mid-sized/large feed production plants. It is suggested for chicken feed but also performs well in the production of cattle feed. The pellet mill can handle three different size dies:

- narrow die, Lamec 630.150 (for working extremely fibrous feed)
- wide die, Lamec 630.200 (for working cattle feed)
- extra-wide die, Lamec 630.240 (for working cereal-rich and extremely fatty feed).

A "COMPACT" model of this mill is also available which is smaller and requires less space.

PELLET MILL CLM 630 220hp

PELLET MILL	PRESSE A GRANULAIRE	PRESSA CUBETTATRICE	PRENSA GRANULADORA	CLM 630.220			
Screw feeder	Alimentateur	Coclea di alimentazione	Còclea de alimentaciòn	C245			
Diameter	Diamètre	Diametro	Diàmetro	mm	245	in	9,65
Motor power	Puissance	Potenza	Potencia motor	kW	4,0	hp	5,4
Flow rate	Capacité	Capacità	Volume	dm³/giro		in³	
				4,51		275	
				5,9		360	
				7,9		482	
Speed	Vitesse	Velocità	Velocidad	0-158 rpm			
Conditioner	Conditionneur	Condizionatore	Acondicionator	M500.2310			
Diameter	Diamètre	Diametro	Diàmetro	mm	500	in	19,7
Lenght	Longeur	Lunghezza	Longitud	mm	2310	in	90,9
Volum	Volume	Volume	Volumen	dm³	453,3	ft³	16,0
Motor power	Puissance	Potenza	Potencia motor	kW	11	hp	15,0
Pellet mill Bloc	Bloc Presse	Blocco Pressa	Bloque prensa	630.220			
Main motor power	Puissance moteur principal	Potenza motore principale	Motor Principal	kW		hp	
				160	200	217,6	272
Main pulley	Poulie conduit	Puleggia cond.	Polea principal	mm	1105	in	43,0
Die speed	Vitesse filiere	Velocità filiera	Velocidad matriz	m/sec	6,0	ft/sec	19,7
				m/sec	7,5	ft/sec	24,6
Belts	Courroies	Cinghie	Correas	n.22 belts type 5V-1800/2000			
Die	Filiere	Trafila	Matriz	Lamec 600.200			
Inner diameter	Diamètre int.	Diametro interno	Diàmetro int.	mm	630	in	24,80
Working width	Largeur utile	Larghezza utile	Anchura de trabajo	mm	200	in	7,87
Total width	Largeur totale	Larghezza totale	Anchura total	mm	260	in	10,24
Working surface	Superficie	Superficie utile	Superficie útil	dm²	39,56	in²	613,2
Roll type	Galets	Rulli tipo	Rodillos	Lamec 630.200	Lamec		
N. rolls	N. de galets	N. rulli	N. rodillos	2		2	
Diameter	Diamètre	Diametro	Diàmetro	mm	310	in	12,20
WEIGHTS	POIDS	PESI	PESOS				
Bloc press	Bloc press	Blocco pressa	Peso del bloque				
Without main motor	Sans moteur principal	Motore principale escluso	Sin el motor principal	kg	5500	lb	12120
With main motor	Avec moteur principal	Motore principale incluso	Con el motor principal	kg	6800	lb	14980
Screw feeder and conditioner	Vis d'Archimède et conditionneur	Coclea di alimentazione e condizionatore	Peso del alimentador y del acondicionador	kg	950	lb	2090
Total Weight	Poids Total	Peso totale	Peso total				
Main motor excluded	Moteur principal exclu	Motore principale escluso	Motor principal excluido	kg	6500	lb	14320
Main motor included	Moteur principal inclu	Motore principale incluso	Motor principal incluido	kg	7800	lb	17190



QUALITY IS OUR WARRANTY



Capacity: 12 - 18 T/h
Overall dimension: 2150 x 3280 x 2700 mm
(compact model: 1540 x 3180 x 2720 mm)

CLM
630
N

PELLET MILL



Animal feeds

CLM 630 300hp

THIS MODEL IS PART OF THE SERIES

"630" units and uses interchangeable series 630 spare parts. It can handle motors of up to 220 kW (300 hp). It is our most popular, most widespread model thanks to its simplicity and solid construction. Its quality/price ratio makes it an excellent choice. Maintenance costs and machine down time is lower than that of the competition. The pellet mill can handle three different size dies:

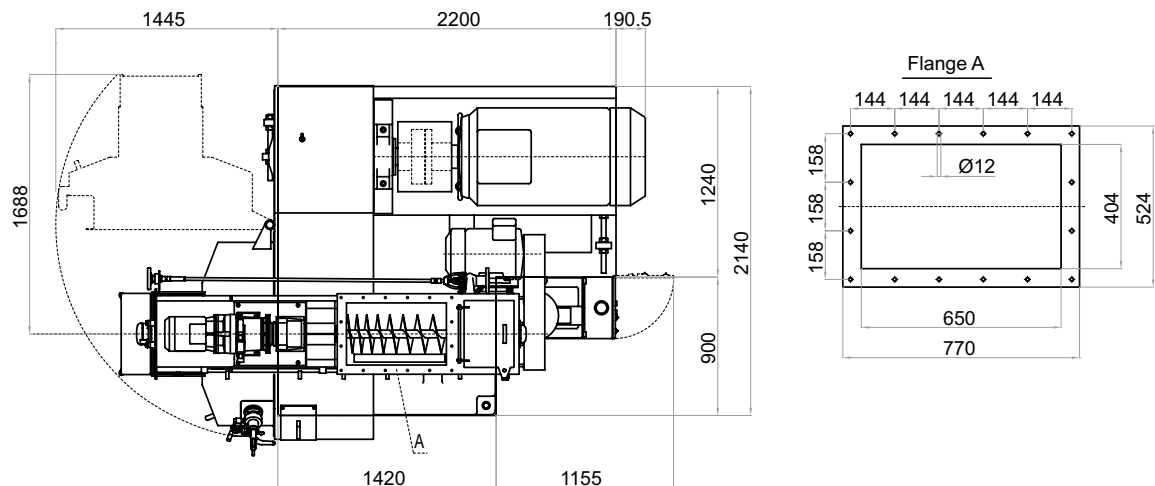
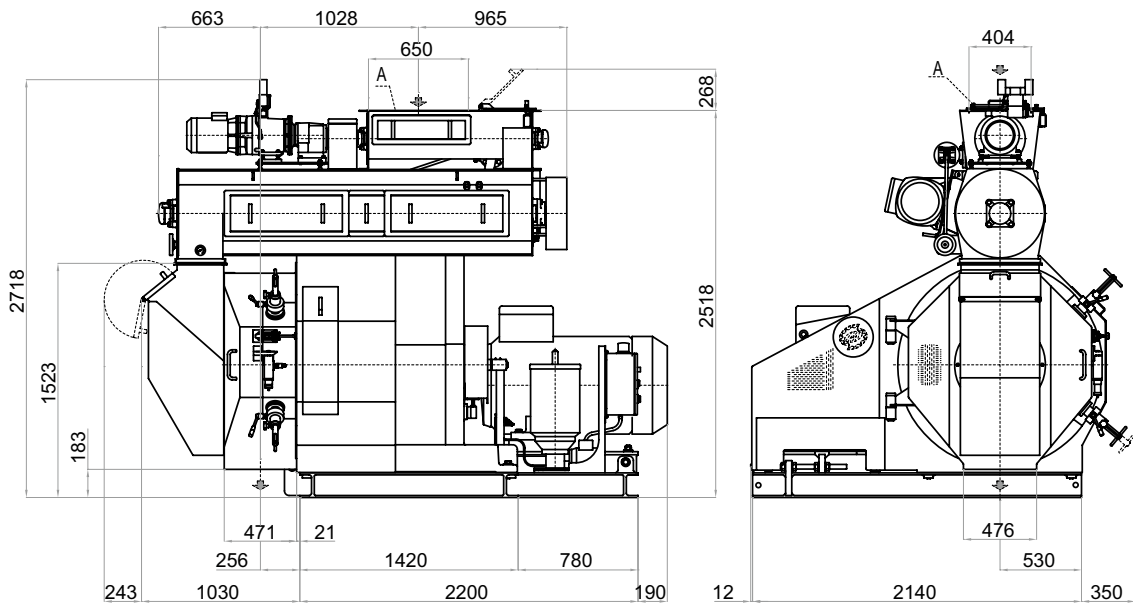
- narrow die, Lamec 630.150 (for working extremely fibrous feed)
- wide die, Lamec 630.200 (for working cattle feed).
- extra-wide die, Lamec 630.240 (for working cereal-rich and high-fat feeds).

A "COMPACT" model of this mill is also available which is smaller and requires less space.



PELLET MILL CLM 630 300hp

PELLET MILL	PRESSE A GRANULAIRE	PRESSA CUBETTATRICE	PRENSA GRANULADORA	CLM 630 N			
Screw feeder	Alimentateur	Coclea di alimentazione	Còclea de alimentaciòn	C245			
Diameter	Diamètre	Diametro	Diàmetro	mm	245	in	9,65
Hydraulic speed variator	Variateur de vitesse hydraulique	Variatore idraulico	Variador de velocidad hidráulico				
Motor power	Puissance	Potenza	Potencia motor	kW	4,0	hp	5,5
Flow rate	Capacité	Capacità	Volume	dm³/giro		in³	
				4,51		275	
				5,9		360	
				7,9		482	
Speed	Vitesse	Velocità	Velocidad	0-158 rpm			
Conditioner	Conditionneur	Condizionatore	Acondicionator	M500.2310			
Diameter	Diamètre	Diametro	Diàmetro	mm	500	in	19,7
lenght	longeur	lunghezza	Longitud	mm	2310	in	90,9
Drive pulley		Puleggia motrice		112mm			
Driven pulley		Puleggia condotta		400mm			
Motor power	Puissance	Potenza	Potencia motor	kW	11	hp	15,0
Belts	Courroies	Cinghie	Correas	n.4 belts			
Volum	Volume	Volume	Volumen	dm³	453,3	ft³	16,0
Motor power*	Puissance*	Potenza*	Potencia motor*	kV	15	hp	20,0
Belts	Courroies	Cinghie	Correas	n.5 belts			
RPM	RPM	RPM	RPM	405			
Volum	Volume	Volume	Volumen	dm³	453,3	ft³	16,0
Pellet mill Bloc	Bloc Presse	Blocco Pressa	Bloque prensa	630			
Main motor power	Puissance moteur principal	Potenza motore principale	Motor Principal	kW		hp	
				200	220	272	299,0
Main pulley	Poulie conduit	Puleggia cond.	Polea principal	mm	1105	in	43,0
Die speed	Vitesse filiere	Velocità filiera	Velocidad matriz	m/sec	6,0	ft/sec	19,7
				m/sec	7,5	ft/sec	24,6
Belts	Courroies	Cinghie	Correas	n.22 belts type 5V-1800/2000			
Die	Filiere	Trafila	Matriz	Lamec 630.200			
Inner diameter	Diamètre int.	Diametro interno	Diàmetro int.	mm	630	in	24,80
Working width	Largeur utile	Larghezza utile	Anchura de trabajo	mm	200	in	7,87
Total width	Largeur totale	Larghezza totale	Anchura total	mm	260	in	10,24
Working surface	Superficie	Superficie utile	Superficie útil	dm²	39,56	in²	613,2
Die	Filiere	Trafila	Matriz	Lamec 630.240			
Inner diameter	Diamètre int.	Diametro interno	Diàmetro int.	mm	630	in	24,80
Working width	Largeur utile	Larghezza utile	Anchura de trabajo	mm	240	in	9,45
Total width	Largeur totale	Larghezza totale	Anchura total	mm	310	in	12,20
Working surface	Superficie	Superficie utile	Superficie útil	dm²	1,95	in²	30,2
Roll type	Galets	Rulli tipo	Rodillos	Lamec 630.200		Lamec 630.240	
N. rolls	N. de galets	N. rulli	N. rodillos	2		2	
Diameter	Diamètre	Diametro	Diàmetro	mm	310	in	310
WEIGHTS	POIDS	PESI	PESOS				
Bloc press	Bloc press	Blocco pressa	Peso del bloque				
Without main motor	Sans moteur principal	Motore principale escluso	Sin el motor principal	kg	5500	lb	12122
With main motor	Avec moteur principal	Motore principale incluso	Con el motor principal	kg	6800	lb	14987
Screw feeder and conditioner	Vis d'Archimède et conditionneur	Coclea di alimentazione e condizionatore	Peso del alimentador y del acondicionador	kg	990	lb	2182
Total Weight	Poids Total	Peso totale	Peso total				
Main motor excluded	Moteur principal exclu	Motore principale escluso	Motor principal excluido	kg	6500	lb	14326
Main motor included	Moteur principal inclu	Motore principale incluso	Motor principal incluido	kg	7900	lb	17412





la meccanica

QUALITY IS PROMPTNESS



Capacity: 12 - 22 T/h
Overall dimension: 2830 x 3530 x 2950 mm
(compact model: 1800 x 3650 x 3380 mm)

CLM
800
P

PELLET MILL



Animal feeds

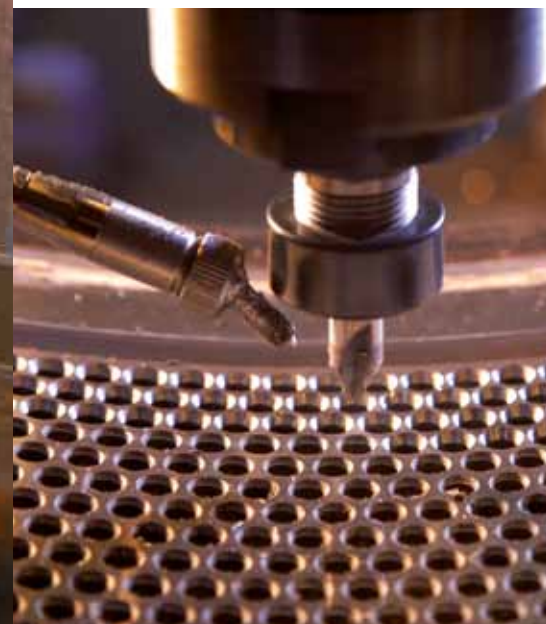
CLM 800 380hp

BECAUSE OF ITS STRENGTH,

this model is often used in the production of alfalfa and straw. It is the result of a restyling of the CLM 800 (no longer produced) to create a machine able to work extremely difficult products. For years it has been considered our most successful model in terms of mechanical resistance. This machine can stand up to comparison with any competitive models in the same range. It melds the construction simplicity and characteristics of all our models with a stiffness guaranteed by a heavy duty cast-iron base. This sturdiness has given the CLM 800 P its nickname: the "Tank". It can handle motors up to 280 kW (380 hp). The pellet mill can handle two different size dies:

- narrow die, Lamec 800.185 (for working extremely fibrous feed)
- wide die, Lamec 800.220 (for working cattle feed).

A "COMPACT" model of this mill is also available which is smaller and requires less space.



PELLET MILL CLM 800 380hp

PELLET MILL	PRESSE A GRANULAIRE	PRESSA CUBETTATRICE	PRENSA GRANULADORA	CLM 800 P			
Screw feeder	Alimentateur	Coclea di alimentazione	Còclea de alimentaciòn	C245			
Diameter	Diamètre	Diametro	Diàmetro	mm	245	in	9,65
Motor power	Puissance	Potenza	Potencia motor	kW	4,0	hp	5,4
Flow rate	Capacité	Capacità	Volume	dm³/giro		in³	
				4,51		275	
				5,9		360	
				7,9		482	
Speed	Vitesse	Velocità	Velocidad	0-158 rpm			
Conditioner	Conditionneur	Condizionatore	Acondicionator	M500.2630			
Diameter	Diamètre	Diametro	Diàmetro	mm	500	in	19,7
Lenght	Longeur	Lunghezza	Longitud	mm	2630	in	103,5
Volum	Volume	Volume	Volumen	dm³	516,1375	ft³	18,2
Motor power	Puissance	Potenza	Potencia motor	kW	15	hp	20,4
Pellet mill Bloc	Bloc Presse	Blocco Pressa	Bloque prensa	800 P			
Main motor power	Puissance moteur principal	Potenza motore principale	Motor Principal	kW		hp	
				250	280	340	380,0
Main pulley	Poulie conduit	Puleggia cond.	Polea principal	mm	1400	in	55,0
Die speed	Vitesse filiere	Velocità filiera	Velocidad matriz	m/sec	6,0	ft/sec	19,7
Belts	Courroies	Cinghie	Correas	n.25 belts type 5V-2360			
Die	Filiere	Trafila	Matriz	Lamec 800.185 (Lamec 800.185 C)			
Inner diameter	Diamètre int.	Diametro interno	Diàmetro int.	mm	800	in	31,50
Working width	Largeur utile	larghezza utile	Anchura de trabajo	mm	185	in	7,28
Total width	Largeur totale	larghezza totale	Anchura total	mm	285	in	11,22
Working surface	Superficie	Superficie utile	Superficie útil	dm²	46,47	in²	720,3
Die	Filiere	Trafila	Matriz	Lamec 800.220 (Lamec 800.220 C)			
Inner diameter	Diamètre int.	Diametro interno	Diàmetro int.	mm	800	in	31,50
Working width	Largeur utile	larghezza utile	Anchura de trabajo	mm	220	in	8,66
Total width	Largeur totale	larghezza totale	Anchura total	mm	285	in	11,22
Working surface	Superficie	Superficie utile	Superficie útil	dm²	55,26	in²	856,6
Die	Filiere	Trafila	Matriz	Lamec 800.250 (Lamec 800.250 C)			
Inner diameter	Diamètre int.	Diametro interno	Diàmetro int.	mm	800	in	31,50
Working width	Largeur utile	larghezza utile	Anchura de trabajo	mm	250	in	9,84
Total width	Largeur totale	larghezza totale	Anchura total	mm	316	in	12,44
Working surface	Superficie	Superficie utile	Superficie útil	dm²	62,80	in²	973,4
Roll type	Galets	Rulli tipo	Rodillos	Lamec 800.185 - Lamec 800.220 - Lamec 800.250			
N. rolls	N. de galets	N. rulli	N. rodillos	2		2	
Diameter	Diamètre	Diametro	Diàmetro	mm	395	in	15,55
WEIGHTS	POIDS	PESI	PESOS				
Bloc press	Bloc press	Blocco pressa	Peso del bloque				
Without main motor	Sans moteur principal	Motore principale escluso	Sin el motor principal	kg	7880	lb	17368
With main motor	Avec moteur principal	Motore principale incluso	Con el motor principal	kg	9730	lb	21445
Screw feeder and conditioner	Vis d'Archimède et conditionneur	Coclea di alimentazione e condizionatore	Peso del alimentador y del acondicionador	kg	1200	lb	2645
Total Weight	Poids Total	Peso totale	Peso total				
Main motor excluded	Moteur principal exclu	Motore principale escluso	Motor principal excluido	kg	9080	lb	20012
Main motor included	Moteur principal inclu	Motore principale incluso	Motor principal incluido	kg	10930	lb	24090

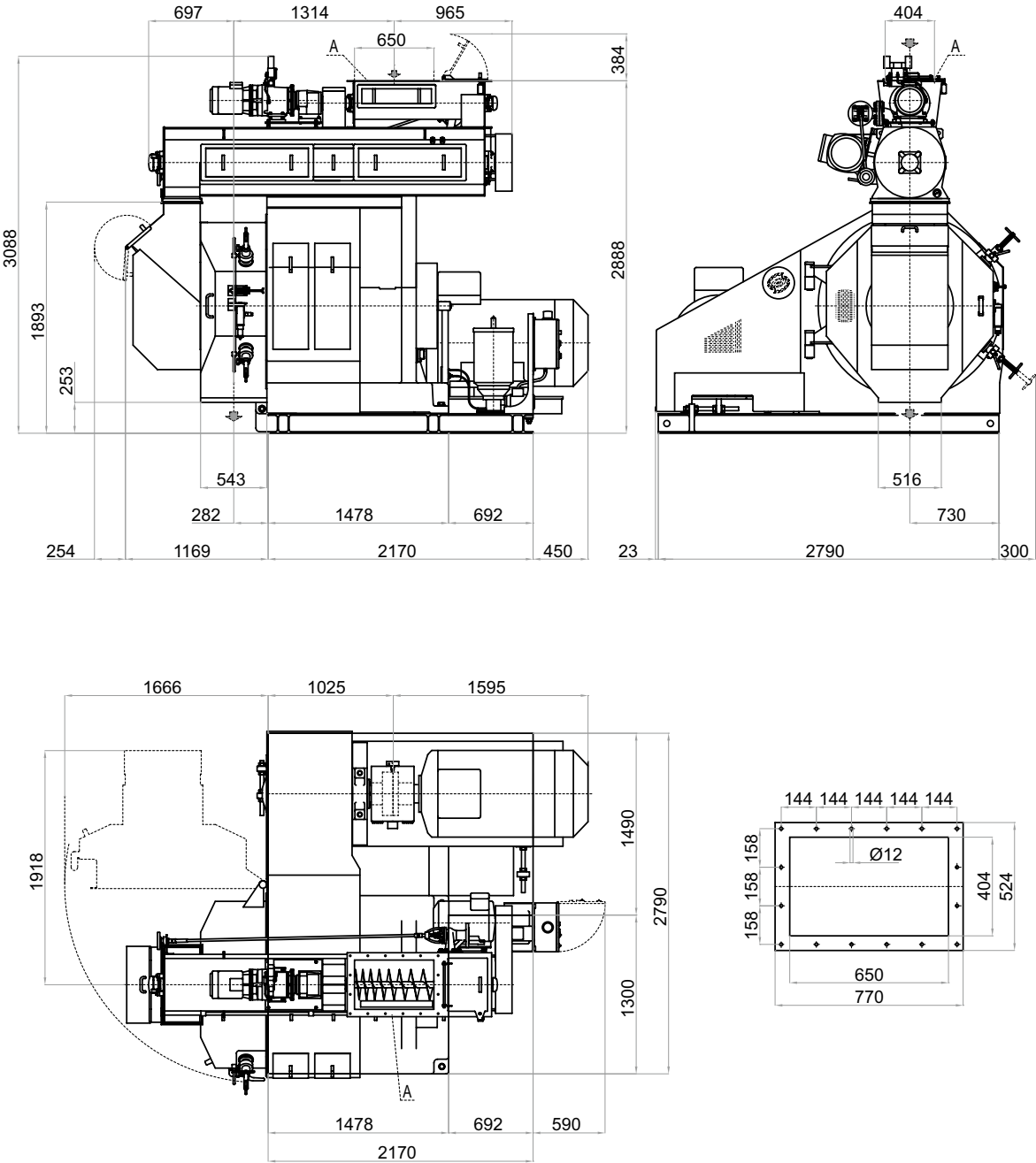


la meccanica



HORIZONTAL
VERSION

ANIMAL FEEDS





la meccanica

QUALITY IS SERIOUSNESS AND COMPETENCE



Capacity: up to 35 T/h
Overall dimension: 2950 x 3850 x 3100 mm

CLM 935

PELLET MILL



Animal feeds

CLM 935 500hp

IT IS STRONG AND RELIABLE.

It was created through the restyling of the CLM 935 (no longer produced) to create a machine able to work extremely difficult products. Despite its size, the simple construction makes this machine easy to manage. It can handle electric motors with a power rating of up to 315 kW (425 hp).

The pellet mill can handle two different size dies:

- narrow die, Lamec 935.185 (for working extremely fibrous feed)
- wide die, Lamec 935.247 (for working cattle feed).



DATA SHEET

CLM 935

DATA SHEET

CLM 935





la meccanica

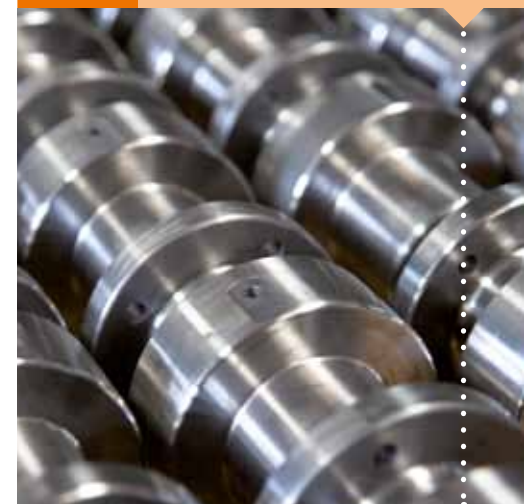
QUALITY IS CONTROL AND KNOW-HOW



Capacity: up to 45 T/h
Overall dimension: 3360 x 4400 x 2600 mm

CLM 1000

PELLET MILL



Animal feeds

CLM 1000 500hp

THIS IS OUR LARGEST MODEL.

It is the most recent "La Meccanica" product and it's an excellent model for large feed producers. The machine represents the continuity of experience gained in over fifty years of work. Despite its size, the machine ensures the solidity and simplicity that has always characterized our machines.



ON REQUEST

COMPACT
VERSION

ON REQUEST

COMPACT
VERSION



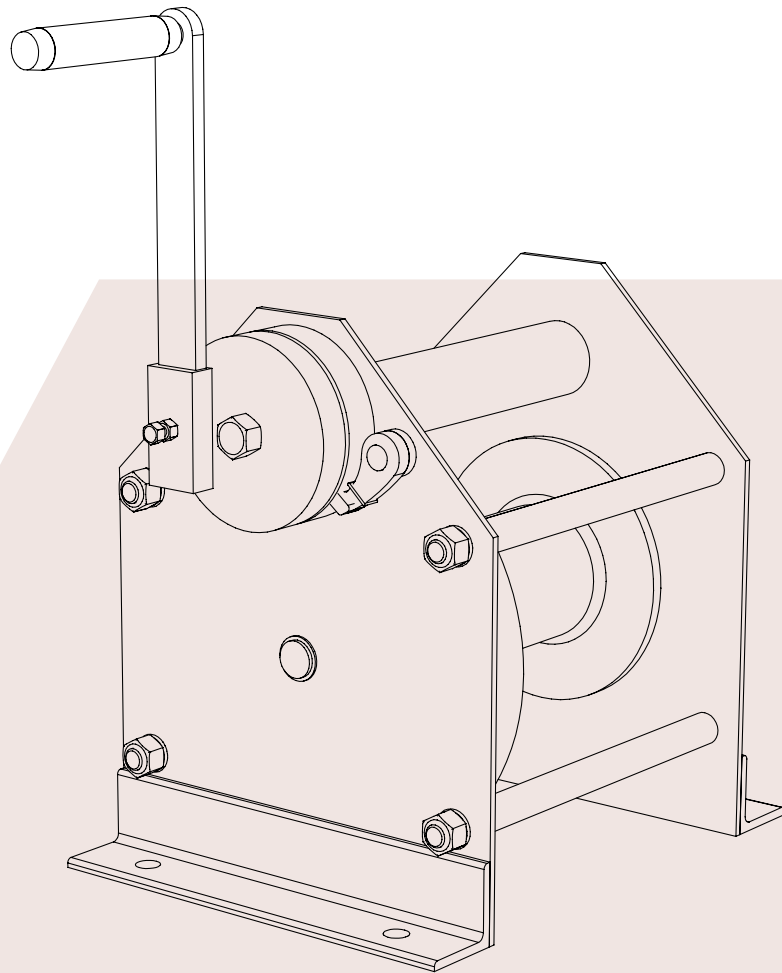
“COMPACT” VERSION OF THE MILL

A “COMPACT” version is available on the models 420, 520, 630 and 800, significantly reducing the amount of space taken up by the machine. These compact models can resolve the space problems of some feed production facilities.

OPTIONALS



PELLET
MILL

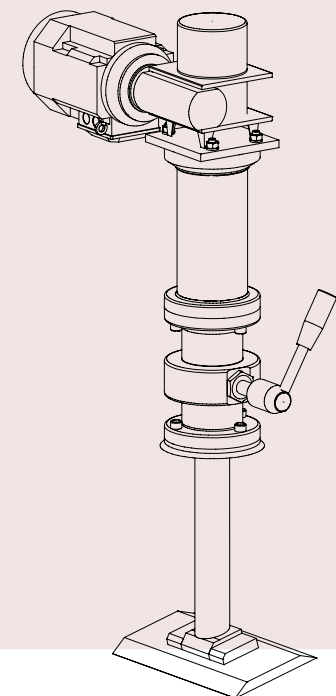


MANUAL HOIST

In place of the carriage, upon request, the machine can be equipped with a manual winch and special anchoring brackets to facilitate hoisting of the rollers and dies.

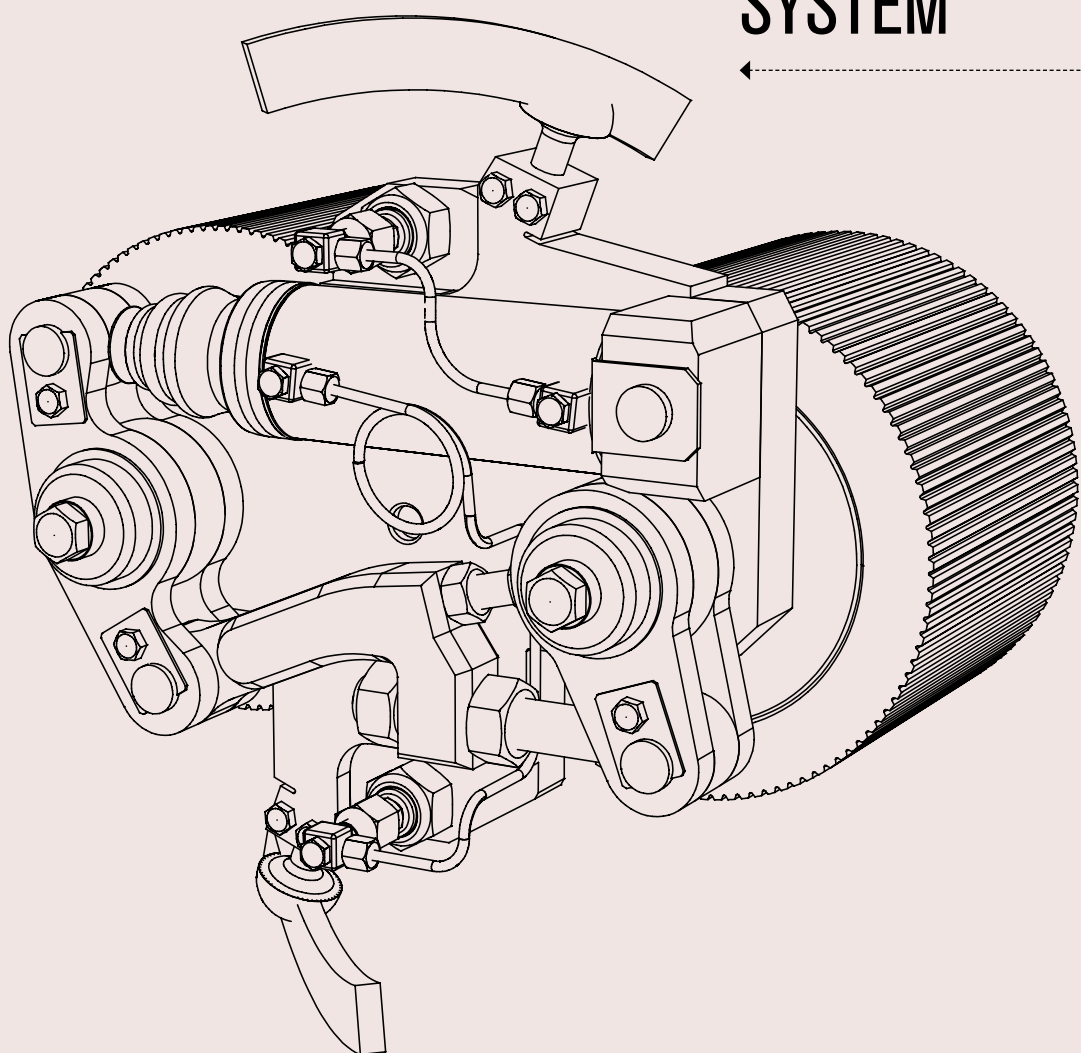
On request we can supply the knife motorized for adjust the pellet length by mean of a remote control.

MOTORIZED KNIFE FOR PELLET





WAP ROLLER REGULATION SYSTEM



The rollers are regulated with a hydraulic piston operated by a hydraulic unit outside the machine but controlled from the control panel.

The position of the rollers is calculated with an angular potentiometer, installed behind the rollers (inside the main shaft). This potentiometer signals the angular position of the roller pins. The electrical panel controlling the entire system can calculate the distance between the rollers and the die through the signal picked up from the potentiometer.

At the electronic panel, the operator chooses the roller position. The panel pressurizes the hydraulic circuit and moves the piston until the rollers reach the desired position.

The hydraulic piston is moved by a hydraulic pump outside the machine. This pump sends oil to the main shaft, passing through the two front plate ties. When the piston has positioned the roller at the distance from the die set by the operator, the circuit is automatically locked by two solenoid valves, keeping the rollers in this position.

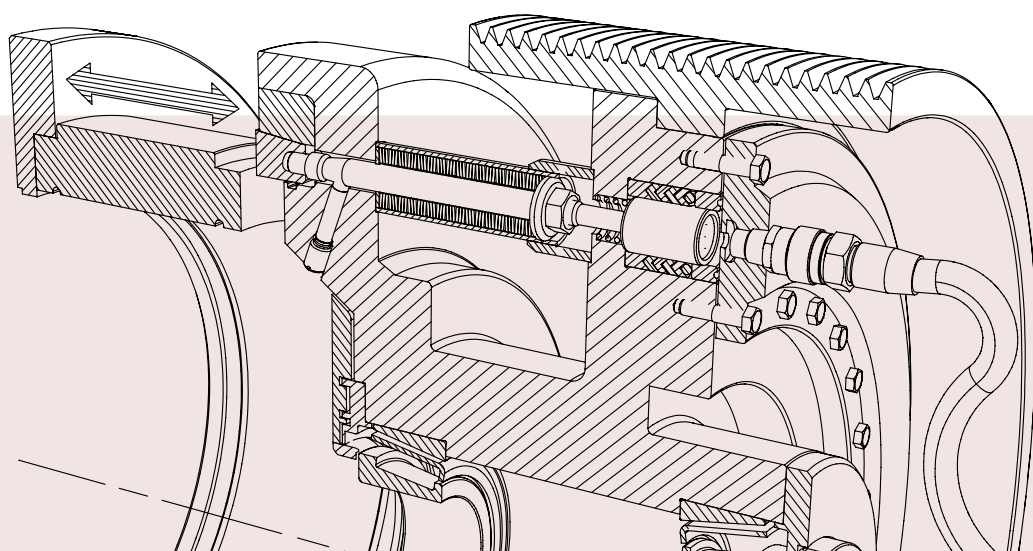
The circuit can achieve a maximum pressure of 250 bar.

The pressure required to move the piston, and thus regulate the rollers, is approximately 150 bar.

Position can be regulated quite rapidly: the roller can be brought 7-8 mm closer to or moved 7-8 mm away from the die in approximately 15 seconds.

The advantages over mechanical regulation systems:

- hydraulic systems are faster
- hydraulic systems can exert greater force (they are more powerful)
- hydraulic systems are more precise.



RAPID BLOC SYSTEM FOR FAST INSTALLATION AND REMOVAL

This device makes it possible to replace the die in 10-20 minutes (depending on the size of the die). The system includes a stainless steel conical ring which is closed and held in place by a series of Belleville washer packs. This ring locks the die in place. The die is released by pressurizing a hydraulic circuit which presses on the Belleville washers and releases the elastic ring.

AUTOMATIC LUBRICATION SYSTEM

This system includes a pump designed and tuned to pump high viscosity grease. It has a plexiglas tank, paddle and a system to break up air bubbles. The system also includes a rotary distributor applied directly on the mill shaft. Lubrication is controlled by an electric panel, included in the supply. This panel makes it possible to meter out the amount of grease required. This is done using two timers which enable you to regulate the lubrication and pause times.

HYDRAULIC CARRIAGE FOR ROLLERS AND DIES

The easy-to-handle hydraulic carriage is equipped with special hooking devices designed to facilitate movement of the rollers and dies, particularly during installation and dismantling operations. This carriage makes it possible to move the dies within the work area easily and safely.



PELLET
MILL



On the feed conveyor a level probe can be install for stop the press when the die is clogged.

LEVEL PROBE ON FEED CONVEYOR

This mechanical device allows to clean automatically the temperature-probe by removing the meal accumulated which delays the reading of the temperature of the conditioner meal.

AUTOMATIC CLEANING DEVICE FOR THE TEMPERATURE PROBE

DOUBLE BY-PASS ON FRONT FEED CONVOYER

For some production lines, it is request the possibility to by-pass the pellet mill and the meal sent directly to the cooler. For this reason, the press can be equipped with a by-pass, controlled by a pneumatic piston, installed in the front conveyor.

HEATING AND/ OR THERMAL INSULATION OF THE CONDITIONER ASSEMBLY

To improve meal conditioning at higher temperatures, the conditioner assembly can be equipped with an outside heating unit that uses either low pressure steam. It can also be lined with an insulating material to enhance thermal efficiency and prevent condensation.



ELECTRONIC CONTROL OF IFM BELT SLIP

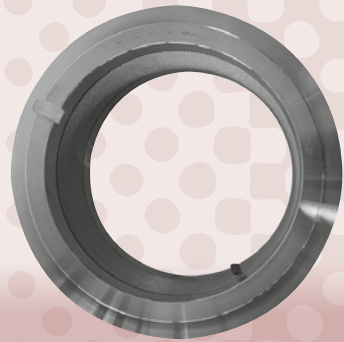
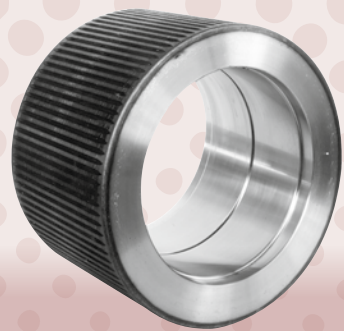
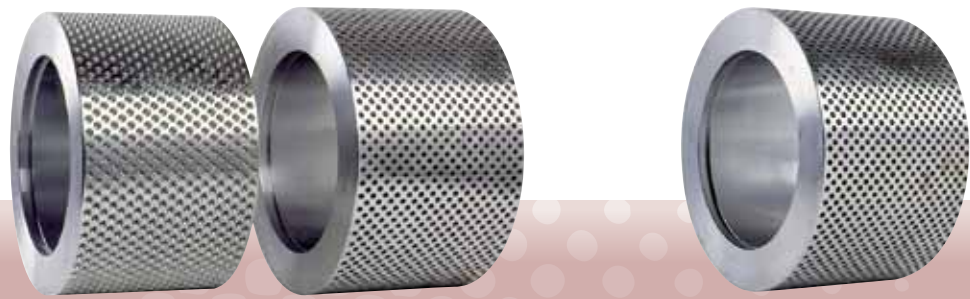
This is an electronic device that cuts in to shut down the motor whenever the belts slip, thus preventing damage.



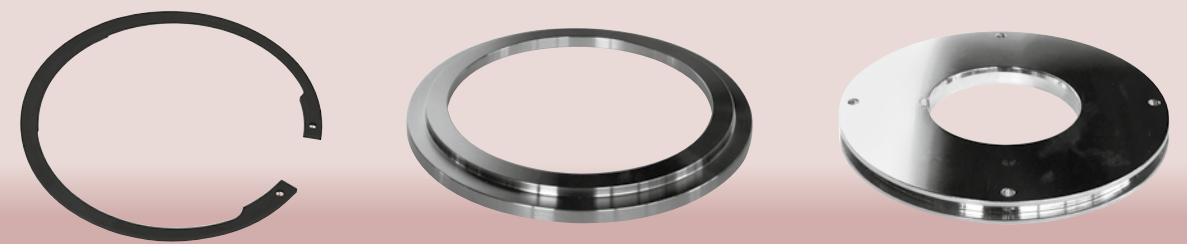
CUSTOMIZATION

Our objective is to supply all our customers with the machine that best meets their needs. For this reason, all our models can be "customized": the customer can choose the position of the motor, the size and volume of the conditioners, the size of the feed screw, color, etc.

SPARE PARTS



SPARE PARTS & colors



COLORS

Upon request, each machine can be made in the following colors:



Ral 1015 (Ivory - Standard)



Ral 6018 (Lamec green)



Ral 7035 (Mouse grey)



Ral 6029 (Bottle green)



Silokonsult AB

Kämpagatan 1
532 36 SKARA
Tfn: 0511-103 65
Fax: 0511-103 66
E-post: info@silokonsult.se
www.silokonsult.se